

For Research Use Only

VEGFC Polyclonal ANTIBODY



Catalog Number: 22601-1-AP

5 Publications

Basic Information

Catalog Number:
22601-1-AP

Size:
50 µg/150 µl

Source:
Rabbit

Isotype:
IgG

Purification Method:
Antigen affinity purification

Immunogen Catalog Number:
AG18182

GenBank Accession Number:
BC035212

GeneID (NCBI):
7424

Full Name:
vascular endothelial growth factor C

Calculated MW:
419aa, 47 kDa

Observed MW:
47-50 kDa

Recommended Dilutions:

WB 1:500-1:2000

IHC 1:50-1:500

IF 1:20-1:200

Applications

Tested Applications:

IF, IHC, WB, ELISA

Cited Applications:

WB

Species Specificity:

human, mouse

Cited Species:

human

**Note-IHC: suggested antigen retrieval with
TE buffer pH 9.0; (*) Alternatively, antigen
retrieval may be performed with citrate
buffer pH 6.0**

Positive Controls:

WB : MCF-7 cells; RAW 264.7 cells

IHC : human prostate cancer tissue; human lung
cancer tissue

IF : RAW 264.7 cells;

Background Information

Notable Publications

Author	Pubmed ID	Journal	Application
Chunhua Wei	31498117	Aging (Albany NY)	WB
Yunzhao Chen	30609930	Mbl Cancer	WB
Zitong Zhao	30867840	Theranostics	WB

Storage

Storage:

Store at -20°C. Stable for one year after shipment.

Storage Buffer:

PBS with 0.02% sodium azide and 50% glycerol pH 7.3.

Aliquoting is unnecessary for -20°C storage

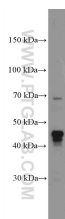
For technical support and original validation data for this
product please contact:

T: 1 (888) 4PTGLAB (1-888-478-4522) (toll
free in USA), or 1(312) 455-8498 (outside
USA)

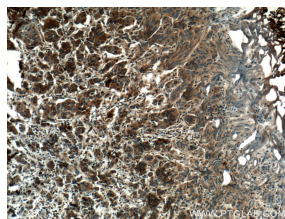
E: proteintech@ptglab.com
W: ptglab.com

This product is exclusively available under
Proteintech Group brand and is not available to
purchase from any other manufacturer.

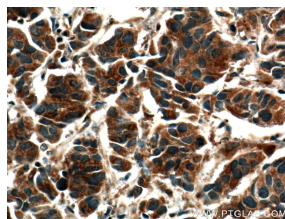
Selected Validation Data



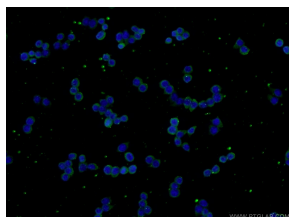
MCF-7 cells were subjected to SDS PAGE followed by western blot with 22601-1-AP(VEGFC Antibody) at dilution of 1:1000 incubated at room temperature for 1.5 hours



Immunohistochemical analysis of paraffin-embedded human prostate cancer tissue slide using 22601-1-AP(VEGFC Antibody) at dilution of 1:200 (under 10x lens), heat mediated antigen retrieved with Tris-EDTA buffer(pH9).



Immunohistochemical analysis of paraffin-embedded human prostate cancer tissue slide using 22601-1-AP(VEGFC Antibody) at dilution of 1:200 (under 40x lens), heat mediated antigen retrieved with Tris-EDTA buffer(pH9).



Immunofluorescent analysis of RAW 264.7 cells using 22601-1-AP(VEGFC antibody) at dilution of 1:50 and Alexa Fluor 488-conjugated AffiniPure Goat Anti-Rabbit IgG(H+L)