

For Research Use Only

CCAR2 Polyclonal ANTIBODY

Catalog Number: 22638-1-AP



Basic Information

Catalog Number:

22638-1-AP

Size:

150UL, Concentration: 440 µg/ml by Bradford method using BSA as the standard;

Source:

Rabbit

Isotype:

IgG

Immunogen Catalog Number:

AG18374

GenBank Accession Number:

BC018269

GeneID (NCBI):

57805

Full Name:

KIAA1967

Calculated MW:

923 aa, 103 kDa

Observed MW:

130 kDa

Purification Method:

Antigen Affinity purified

Recommended Dilutions:

WB 1:500-1:2000

IP 0.5-4.0 µg for IP and 1:500-1:2000 for WB

IHC 1:20-1:200

IF 1:20-1:200

Applications

Tested Applications:

IF, IHC, IP, WB, ELISA

Species Specificity:

human, mouse, rat

Note-IHC: suggested antigen retrieval with TE buffer pH 9.0; (*) Alternatively, antigen retrieval may be performed with citrate buffer pH 6.0

Positive Controls:

WB: mouse brain tissue, HEK-293 cells, HeLa cells, MCF-7 cells, rat brain tissue

IP: mouse brain tissue,

IHC: human breast cancer tissue, human colon cancer tissue, human pancreas cancer tissue

IF: HepG2 cells,

Background Information

Storage

Storage:

Store at -20°C. Stable for one year after shipment.

Storage Buffer:

PBS with 0.02% sodium azide and 50% glycerol pH 7.3.

Aliquoting is unnecessary for -20°C storage

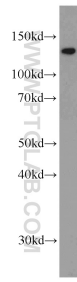
For technical support and original validation data for this product please contact:

T: 1 (888) 4PTGLAB (1-888-478-4522) (toll free in USA), or 1(312) 455-8498 (outside USA)

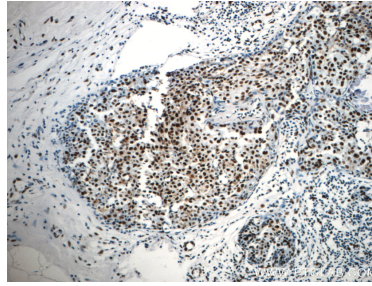
E: proteintech@ptglab.com
W: ptglab.com

This product is exclusively available under Proteintech Group brand and is not available to purchase from any other manufacturer.

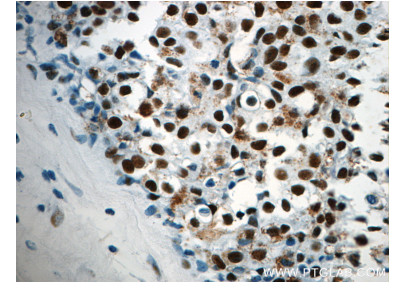
Selected Validation Data



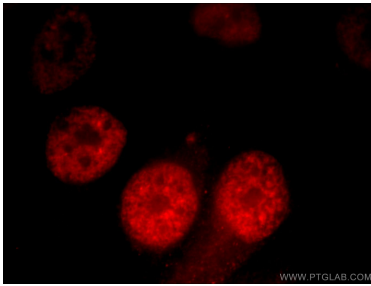
mouse brain tissue were subjected to SDS PAGE followed by western blot with 22638-1-AP (CCAR2 antibody) at dilution of 1:1000 incubated at room temperature for 1.5 hours.



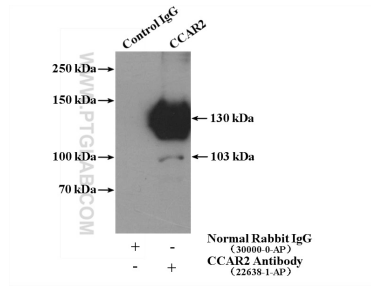
Immunohistochemical analysis of paraffin-embedded human breast cancer slide using 22638-1-AP (CCAR2 antibody at dilution of 1:400.



Immunohistochemical analysis of paraffin-embedded human breast cancer slide using 22638-1-AP (CCAR2 antibody at dilution of 1:400.



Immunofluorescent analysis of HepG2 cells, using KIAA1967 antibody 22638-1-AP at 1:50 dilution and Rhodamine-labeled goat anti-rabbit IgG (red).



IP Result of anti-CCAR2 (IP:22638-1-AP, 4ug; Detection:22638-1-AP 1:1000) with mouse brain tissue lysate 4000ug.