

For Research Use Only

CCS Polyclonal antibody

Catalog Number: 22802-1-AP **3 Publications**



Basic Information

Catalog Number:

22802-1-AP

Size:

150UL, Concentration: 360 µg/ml by Bradford method using BSA as the standard;

Source:

Rabbit

Isotype:

IgG

Immunogen Catalog Number:

AG18850

GenBank Accession Number:

BC105016

GeneID (NCBI):

9973

Full Name:

copper chaperone for superoxide dismutase

Calculated MW:

274 aa, 29 kDa

Observed MW:

34 kDa

Purification Method:

Antigen affinity purification

Recommended Dilutions:

WB 1:500-1:2000

IP 0.5-4.0 µg for IP and 1:500-1:2000 for WB

IF 1:20-1:200

Applications

Tested Applications:

IF, IP, WB, ELISA

Cited Applications:

WB

Species Specificity:

human

Cited Species:

human, mouse

Positive Controls:

WB: HepG2 cells,

IP: HepG2 cells,

IF: HepG2 cells,

Background Information

Notable Publications

Author	Pubmed ID	Journal	Application
Rashim Pal Singh	32416059	Cell Stem Cell	WB
Sarah E Antinone	28120938	Sci Rep	WB
Nadine Bakkar	33359139	Neurobiol Dis	WB

Storage

Storage:

Store at -20°C. Stable for one year after shipment.

Storage Buffer:

PBS with 0.02% sodium azide and 50% glycerol pH 7.3.

Aliquoting is unnecessary for -20°C storage

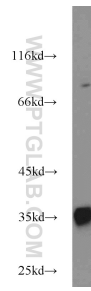
For technical support and original validation data for this product please contact:

T: 1 (888) 4PTGLAB (1-888-478-4522) (toll free in USA), or 1(312) 455-8498 (outside USA)

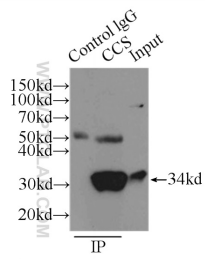
E: proteintech@ptglab.com
W: ptglab.com

This product is exclusively available under Proteintech Group brand and is not available to purchase from any other manufacturer.

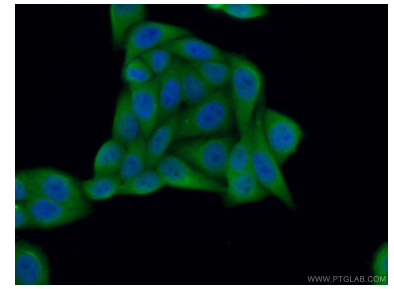
Selected Validation Data



HepG2 cells were subjected to SDS PAGE followed by western blot with 22802-1-AP (CCS antibody) at dilution of 1:1000 incubated at room temperature for 1.5 hours.



IP Result of anti-CCS (IP:22802-1-AP, 3ug; Detection:22802-1-AP 1:1000) with HepG2 cells lysate 6000ug.



Immunofluorescent analysis of (10% Formaldehyde) fixed HepG2 cells using 22802-1-AP (CCS antibody) at dilution of 1:50 and Alexa Fluor 488-conjugated AffiniPure Goat Anti-Rabbit IgG(H+L).