

For Research Use Only

IGF2BP1 Polyclonal antibody

Catalog Number: 22803-1-AP

Featured Product

23 Publications



Basic Information

Catalog Number: 22803-1-AP	GenBank Accession Number: BC156957	Purification Method: Antigen affinity purification
Size: 150ul, Concentration: 900 µg/ml by Nanodrop and 333 µg/ml by Bradford method using BSA as the standard;	GeneID (NCBI): 10642	Recommended Dilutions: WB 1:500-1:2000 IP 0.5-4.0 ug for IP and 1:500-1:2000 for WB
Source: Rabbit	Full Name: insulin-like growth factor 2 mRNA binding protein 1	IHC 1:20-1:200 IF 1:20-1:200
Isotype: IgG	Calculated MW: 577 aa, 63 kDa	
Immunogen Catalog Number: AG18859	Observed MW: 65-70 kDa	

Applications

Tested Applications:

IF, IHC, IP, WB, ELISA

Cited Applications:

IF, IHC, RIP, WB

Species Specificity:

human, mouse, rat

Cited Species:

human, mouse, rat

Note-IHC: suggested antigen retrieval with TE buffer pH 9.0; (*) Alternatively, antigen retrieval may be performed with citrate buffer pH 6.0

Positive Controls:

WB: Jurkat cells, rat kidney tissue, HEK-293 cells, HuH-7 cells, mouse kidney tissue, A375 cells, HepG2 cells

IP: HEK-293 cells,

IHC: human testis tissue, human kidney tissue, human lung cancer tissue, human liver cancer tissue

IF: A375 cells,

Background Information

IGF2BP1, also named as CRDBP, VICKZ1, ZBP1, is a 577 amino acid protein, which belongs to the RRM IMP/VICKZ family. IGF2BP1 can form homodimers and heterodimers with IGF2BP1 and IGF2BP3. IGF2BP1 is mainly expressed in the embryo, including in fetal liver, fetal lung, fetal kidney, fetal thymus and also expressed follicles of ovary, as well as in gonocytes of testis, spermatogonia, semen, oocytes and placenta. IGF2BP1 is Expressed in various cancers, including testis and lung cancers, as well as kidney, prostate and trachea cancers. IGF2BP1 as RNA-binding factor that recruits target transcripts to cytoplasmic protein-RNA complexes (mRNPs). It also modulates the rate and location at which target transcripts encounter the translational apparatus and shields them from endonuclease attacks or microRNA-mediated degradation. The calculated molecular weight of IGF2BP1 is 63 kDa, but modified IGF2BP1 is about 65-70 kDa.

Notable Publications

Author	Pubmed ID	Journal	Application
Mei-Jia Zhu	32918374	J Cell Mol Med	WB, IHC
Luis Daniel Cruz-Zaragoza	34672953	Cell	WB
Baiqing He	34611079	Aging (Albany NY)	RIP

Storage

Storage:

Store at -20°C. Stable for one year after shipment.

Storage Buffer:

PBS with 0.02% sodium azide and 50% glycerol pH 7.3.

Aliquoting is unnecessary for -20°C storage

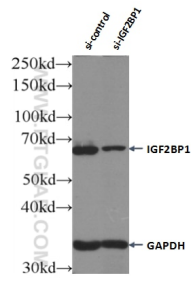
For technical support and original validation data for this product please contact:

T: 1 (888) 4PTGLAB (1-888-478-4522) (toll free in USA), or 1(312) 455-8498 (outside USA)

E: proteintech@ptglab.com
W: ptglab.com

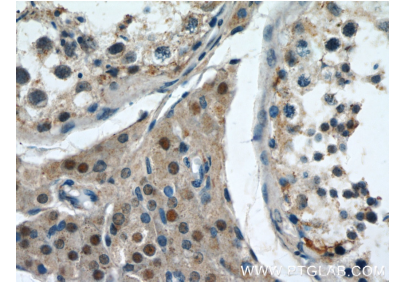
This product is exclusively available under Proteintech Group brand and is not available to purchase from any other manufacturer.

Selected Validation Data

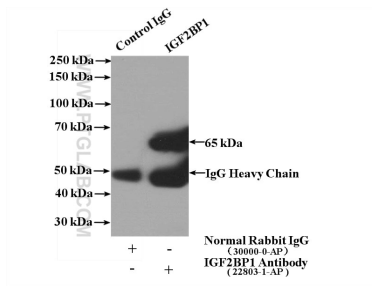


WB result of IGF2BP1 antibody (22803-1-AP; 1:6000; incubated at room temperature for 1.5 hours) with sh-Control and sh-IGF2BP1 transfected Jurkat cells.

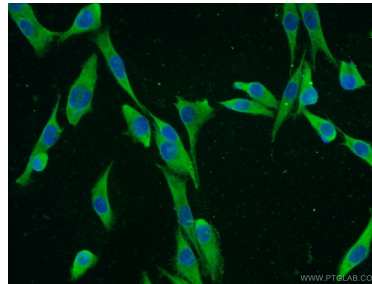
Jurkat cells were subjected to SDS PAGE followed by western blot with 22803-1-AP (IGF2BP1 antibody) at dilution of 1:1000 incubated at room temperature for 1.5 hours.



Immunohistochemical analysis of paraffin-embedded human testis slide using 22803-1-AP (IGF2BP1 Antibody) at dilution of 1:50.



IP Result of anti-IGF2BP1 (IP:22803-1-AP, 4ug; Detection:22803-1-AP 1:1000) with HEK-293 cells lysate 1480ug.



Immunofluorescent analysis of A375 cells using 22803-1-AP (IGF2BP1 antibody) at dilution of 1:50 and Alexa Fluor 488-conjugated AffiniPure Goat Anti-Rabbit IgG(H+L).