

OFD1

Polyclonal ANTIBODY

Catalog Number: 22851-1-AP

2 Publications

Basic Information

Catalog Number:
22851-1-AP

Size:
44 µg/150 µl

Source:
Rabbit

Isotype:
IgG

Purification Method:
Antigen affinity purification
Immunogen Catalog Number:
AG18898

GenBank Accession Number:
BC096344

GeneID (NCBI):
8481

Full Name:
oral-facial-digital syndrome 1

Calculated MW:
1012aa, 117 kDa

Observed MW:
43 kDa

Recommended Dilutions:

WB 1:500-1:1000
IHC 1:20-1:200

Applications

Tested Applications:

IHC, WB, ELISA

Cited Applications:

IF, WB

Species Specificity:

human

Cited Species:

human, rat

Note: suggested antigen retrieval with TE buffer pH 9.0; (*) Alternatively, antigen retrieval may be performed with citrate buffer pH 6.0

Positive Controls:

WB : HeLa cells; SH-SY5Y cells

IHC : human brain tissue;

Background Information

OFD1, also named as CXorf5 and 71-7A, belongs to the OFD1 family. It has been implicated in several developmental syndromes, including a male-lethal X-linked dominant condition, Oral-Facial-Digital type 1 (OFD1) syndrome, X-linked recessive Simpson-Golabi-Behmel syndrome type 2 (SGBS2) and Joubert syndrome and related disorders (JSRDs). It is a component of the centrioles controlling mother and daughter centrioles length. It recruits to the centriole IFT88 and centriole distal appendage-specific proteins including CEP164. Involved in the biogenesis of the cilium, a centriole-associated function. OFD1 plays an important role in development by regulating Wnt signaling and the specification of the left-right axis. This antibody recognizes all the isoforms of OFD1. The 43 kDa is isoform 2. The ~80 kDa band is unknown.

Notable Publications

Author	Pubmed ID	Journal	Application
Dragomir B Krastev	29789535	Nat Commun	IF
Ji Hyun Shin	25796328	Biochem Biophys Res Commun	WB

Storage

Storage:

Store at -20°C. Stable for one year after shipment.

Storage Buffer:

PBS with 0.02% sodium azide and 50% glycerol pH 7.3.

Aliquoting is unnecessary for -20°C storage

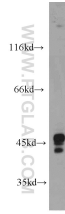
For technical support and original validation data for this product please contact:

T: 1 (888) 4PTGLAB (1-888-478-4522) (toll free in USA), or 1(312) 455-8498 (outside USA)

E: proteintech@ptglab.com
W: ptglab.com

This product is exclusively available under Proteintech Group brand and is not available to purchase from any other manufacturer.

Selected Validation Data



HeLa cells were subjected to SDS PAGE followed by western blot with 22851-1-AP(OFD1 antibody) at dilution of 1:500 incubated at room temperature for 1.5 hours

