

For Research Use Only

BARD1 Polyclonal ANTIBODY



Catalog Number: 22964-1-AP **1 Publications**

Basic Information

Catalog Number: 22964-1-AP
Size: 150UL, Concentration: 260 µg/ml by Bradford method using BSA as the standard;
Source: Rabbit
Isotype: IgG
Immunogen Catalog Number: AG18965

GenBank Accession Number: BC126426
GeneID (NCBI): 580
Full Name: BRCA1 associated RING domain 1
Calculated MW: 777 aa, 87 kDa
Observed MW: 90-100 kDa

Purification Method: Antigen Affinity purified
Recommended Dilutions: WB 1:200-1:1000

Applications

Tested Applications: WB, ELISA
Cited Applications: WB
Species Specificity: human

Positive Controls: WB : SH-SY5Y cells,

Background Information

Notable Publications

Author	Pubmed ID	Journal	Application
Yixi Xu	29106372	Elife	WB

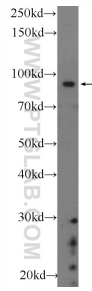
Storage

Storage: Store at -20°C. Stable for one year after shipment.
Storage Buffer: PBS with 0.02% sodium azide and 50% glycerol pH 7.3.
Aliquoting is unnecessary for -20°C storage

For technical support and original validation data for this product please contact:
T: 1 (888) 4PTGLAB (1-888-478-4522) (toll free in USA), or 1(312) 455-8498 (outside USA)
E: proteintech@ptglab.com
W: ptglab.com

This product is exclusively available under Proteintech Group brand and is not available to purchase from any other manufacturer.

Selected Validation Data



SH-SY5Y cells were subjected to SDS PAGE followed by western blot with 22964-1-AP (BARD1 Antibody) at dilution of 1:300 incubated at room temperature for 1.5 hours.