

CDKAL1 Polyclonal ANTIBODY

Catalog Number: 22988-1-AP

Basic Information

Catalog Number: 22988-1-AP	GenBank Accession Number: BC121020	Recommended Dilutions: WB 1:1000-1:4000 IHC 1:50-1:500 IF 1:20-1:200
Size: 55 µg/150 µl	GeneID (NCBI): 54901	
Source: Rabbit	Full Name: CDK5 regulatory subunit associated protein 1-like 1	
Isotype: IgG	Calculated MW: 579aa, 65 kDa	
Purification Method: Antigen Affinity purified	Observed MW: 60-65 kDa	
Immunogen Catalog Number: AG19060		

Applications

Tested Applications:

IF, IHC, WB, ELISA

Species Specificity:

human, mouse

Note: suggested antigen retrieval with TE buffer pH 9.0; (*) Alternatively, antigen retrieval may be performed with citrate buffer pH 6.0

Positive Controls:

WB : mouse lung tissue; HepG2 cells, HT-1080 cells, Jurkat cells

IHC : human oesophagus tissue;

IF : HepG2 cells;

Background Information

Cell cycle progression is controlled, in part, by a family of cyclin dependent kinases (Cdk5) that work to phosphorylate key substrates involved in each phase of cell cycle progression. Cdk5 are the catalytic subunits of serine/threonine protein kinases, a large family of proteins that act as regulators of the eukaryotic cell cycle. CDKAL1 (Cdk5 regulatory subunit associated protein 1-like 1) is a 579 amino acid single-pass membrane protein that contains one TRAM domain and is similar to Cdk5 regulatory subunit associated proteins (CDK5RAPs). Expressed in pancreas, brain and skeletal muscle, CDKAL1 uses iron as a cofactor and is involved in glucose-stimulated insulin secretion. Defects in the gene encoding CDKAL1 impair insulin secretion and are associated with the development of type 2 diabetes. Multiple isoforms of CDKAL1 exist due to alternative splicing events. This antibody recognizes the 65kd isoform of CDKAL1.

Notable Publications

Author	Pubmed ID	Journal	Application

Storage

Storage:

Store at -20°C. Stable for one year after shipment.

Storage Buffer:

PBS with 0.02% sodium azide and 50% glycerol pH 7.3.

Aliquoting is unnecessary for -20°C storage

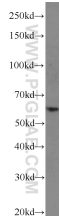
For technical support and original validation data for this product please contact:

T: 1 (888) 4PTGLAB (1-888-478-4522) (toll free in USA), or 1(312) 455-8498 (outside USA)

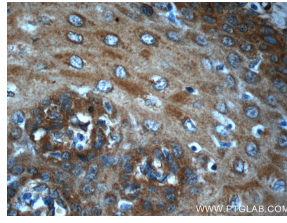
E: proteintech@ptglab.com
W: ptglab.com

This product is exclusively available under Proteintech Group brand and is not available to purchase from any other manufacturer.

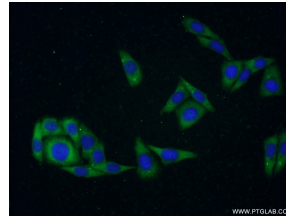
Selected Validation Data



mouse lung tissue were subjected to SDS PAGE followed by western blot with 22988-1-AP(CDKAL1 antibody) at dilution of 1:2000 incubated at room temperature for 1.5 hours



Immunohistochemistry of paraffin-embedded human esophagus slide using 22988-1-AP(CDKAL1 Antibody) at dilution of 1:50



Immunofluorescent analysis of HepG2 cells using 22988-1-AP(CDKAL1 antibody) at dilution of 1:50 and Alexa Fluor 488-conjugated AffiniPure Goat Anti-Rabbit IgG(H+L)