

For Research Use Only

SORCS1 Polyclonal ANTIBODY

Catalog Number: 23002-1-AP



Basic Information

Catalog Number: 23002-1-AP	GenBank Accession Number: BC131597	Recommended Dilutions: WB 1:500-1:1000 IHC 1:20-1:200
Size: 29 µg/150 µl	GeneID (NCBI): 114815	
Source: Rabbit	Full Name: sortilin-related VPS10 domain containing receptor 1	
Isotype: IgG	Calculated MW: 1168aa, 130 kDa	
Purification Method: Antigen Affinity purified	Observed MW: 60-80 kDa	
Immunogen Catalog Number: AG19199		

Applications

Tested Applications:
FC, IHC, WB, ELISA

Species Specificity:
human, mouse

Note: suggested antigen retrieval with TE buffer pH 9.0; (*) Alternatively, antigen retrieval may be performed with citrate buffer pH 6.0

Positive Controls:

WB : mouse brain tissue; HEK-293 cells, human brain tissue, K-562 cells, mouse kidney tissue

IHC : human brain tissue;

Background Information

SORCS1, also named as SorCS, belongs to the family of VPS10 domain-containing receptors. SorCS1 immunoreactivity is widespread in a population of neurons throughout the brain. Two different types of cellular localization were observed. Most SorCS1 immunoreactive neurons exhibit a punctate cytoplasmic staining which extends into the dendrites, whilst occasionally SorCS1 neuronal immunoreactivity is associated with the plasma membrane.

Notable Publications

Author	Pubmed ID	Journal	Application
--------	-----------	---------	-------------

Storage

Storage:
Store at -20°C. Stable for one year after shipment.

Storage Buffer:
PBS with 0.02% sodium azide and 50% glycerol pH 7.3.

Aliquoting is unnecessary for -20°C storage

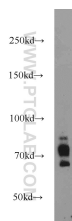
For technical support and original validation data for this product please contact:

T: 1 (888) 4PTGLAB (1-888-478-4522) (toll free in USA), or 1(312) 455-8498 (outside USA)

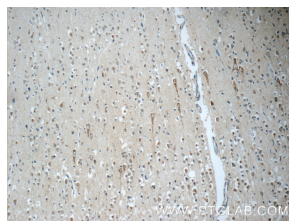
E: proteintech@ptglab.com
W: ptglab.com

This product is exclusively available under Proteintech Group brand and is not available to purchase from any other manufacturer.

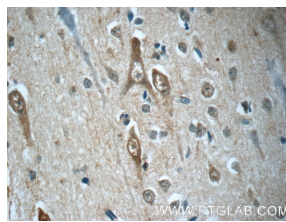
Selected Validation Data



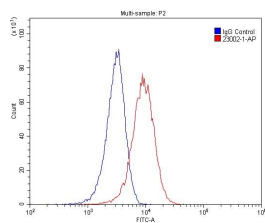
mouse brain tissue were subjected to SDS PAGE followed by western blot with 23002-1-AP(SORCS1 antibody) at dilution of 1:1000 incubated at room temperature for 1.5 hours



Immunohistochemistry of paraffin-embedded human brain tissue slide using 23002-1-AP(SORCS1 Antibody) at dilution of 1:50 (under 10x lens)



Immunohistochemistry of paraffin-embedded human brain tissue slide using 23002-1-AP(SORCS1 Antibody) at dilution of 1:50 (under 40x lens)



1X10⁶ HeLa cells were stained with 0.2ug SORCS1 antibody (23002-1-AP, red) and control antibody (blue). Fixed with 4% PFA blocked with 3% BSA (30 min). Alexa Fluor 488-conjugated AffiniPure Goat Anti-Rabbit IgG(H+L) with dilution 1:1500.