

For Research Use Only

Alpha cardiac muscle actin Polyclonal antibody

Catalog Number: 23082-1-AP

1 Publications



Basic Information

Catalog Number:

23082-1-AP

Size:

150ul, Concentration: 500 ug/ml by Nanodrop and 233 ug/ml by Bradford method using BSA as the standard;

Source:

Rabbit

Isotype:

IgG

Immunogen Catalog Number:

AG19482

GenBank Accession Number:

BC009978

GeneID (NCBI):

70

UNIPROT ID:

P68032

Full Name:

actin, alpha, cardiac muscle 1

Calculated MW:

377 aa, 42 kDa

Observed MW:

42-45 kDa

Purification Method:

Antigen affinity purification

Recommended Dilutions:

WB: 1:500-1:2000

IHC: 1:200-1:1000

FC (Intra): 0.40 ug per 10⁶ cells in a 100 µl suspension

Applications

Tested Applications:

WB, IHC, FC (Intra), ELISA

Cited Applications:

WB

Species Specificity:

human, mouse

Note-IHC: suggested antigen retrieval with TE buffer pH 9.0; (*) Alternatively, antigen retrieval may be performed with citrate buffer pH 6.0

Positive Controls:

WB : mouse heart tissue,

IHC : human normal colon, human colon tissue, human heart tissue, human skeletal muscle tissue, human small intestine tissue, mouse skeletal muscle tissue, mouse heart tissue, mouse colon tissue

FC (Intra) : C2C12 cells,

Notable Publications

Author	Pubmed ID	Journal	Application
Hideshi Okada	25466765	Circ Heart Fail	WB

Storage

Storage:

Store at -20°C. Stable for one year after shipment.

Storage Buffer:

PBS with 0.02% sodium azide and 50% glycerol, pH7.3

Aliquoting is unnecessary for -20°C storage

*** 20ul sizes contain 0.1% BSA

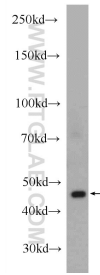
For technical support and original validation data for this product please contact:

T: 1 (888) 4PTGLAB (1-888-478-4522) (toll free in USA), or 1(312) 455-8498 (outside USA)

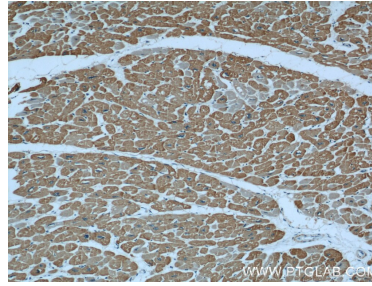
E: proteintech@ptglab.com
W: ptglab.com

This product is exclusively available under Proteintech Group brand and is not available to purchase from any other manufacturer.

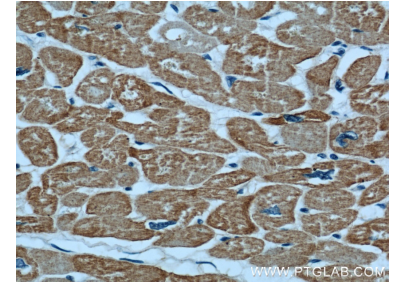
Selected Validation Data



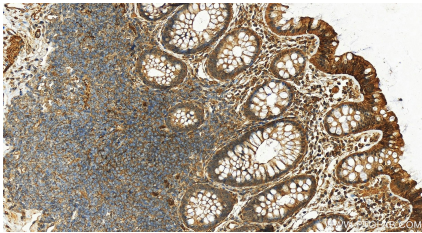
mouse heart tissue were subjected to SDS PAGE followed by western blot with 23082-1-AP (alpha Actin antibody at dilution of 1:1000 incubated at room temperature for 1.5 hours.



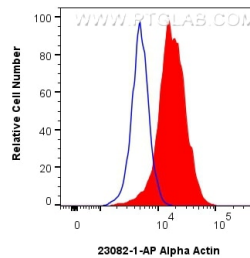
Immunohistochemical analysis of paraffin-embedded human heart using 23082-1-AP (alpha Actin antibody) at dilution of 1:100 (under 10x lens).



Immunohistochemical analysis of paraffin-embedded human heart using 23082-1-AP (alpha Actin antibody) at dilution of 1:100 (under 40x lens).



Immunohistochemical analysis of paraffin-embedded human colon tissue slide using 23082-1-AP (Alpha Actin antibody) at dilution of 1:200 (under 20x lens). Heat mediated antigen retrieval with Tris-EDTA buffer (pH 9.0).



1×10^6 C2C12 cells were intracellularly stained with 0.4 ug Alpha Actin Polyclonal antibody (23082-1-AP) and CoraLite®488-Conjugated Goat Anti-Rabbit IgG(H+L) (SA00013-2)(red), or 0.4 ug Rabbit IgG control Rabbit PolyAb (30000-O-AP) (blue). Cells were fixed with 4% PFA and permeabilized with Flow Cytometry Perm Buffer (PF00011-C).