

For Research Use Only

ATXN3L Polyclonal ANTIBODY

Catalog Number: 23166-1-AP



Basic Information

Catalog Number:

23166-1-AP

Size:

150UL, Concentration: 647 µg/ml by Bradford method using BSA as the standard;

Source:

Rabbit

Isotype:

IgG

Immunogen Catalog Number:

AG19611

GenBank Accession Number:

BC137187

GeneID (NCBI):

92552

Full Name:

ataxin 3-like

Calculated MW:

355 aa, 41 kDa

Observed MW:

41 kDa

Purification Method:

Antigen affinity purification

Recommended Dilutions:

WB 1:500-1:1000

IHC 1:50-1:500

Applications

Tested Applications:

IHC, WB, ELISA

Species Specificity:

human

Note-IHC: suggested antigen retrieval with TE buffer pH 9.0; (*) Alternatively, antigen retrieval may be performed with citrate buffer pH 6.0

Positive Controls:

WB: human testis tissue,

IHC: human testis tissue,

Background Information

ATXN3L, also named as Ataxin-3-like protein, is a 355 amino acid protein, which contains 1 Josephin domain and 2 UIM (ubiquitin-interacting motif) domains. ATXN3L localizes in the nucleus and as a deubiquitinating enzyme that cleaves both 'Lys-48'-linked and 'Lys-63'-linked poly-ubiquitin chains.

Storage

Storage:

Store at -20°C. Stable for one year after shipment.

Storage Buffer:

PBS with 0.02% sodium azide and 50% glycerol pH 7.3.

Aliquoting is unnecessary for -20°C storage

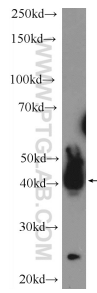
For technical support and original validation data for this product please contact:

T: 1 (888) 4PTGLAB (1-888-478-4522) (toll free in USA), or 1(312) 455-8498 (outside USA)

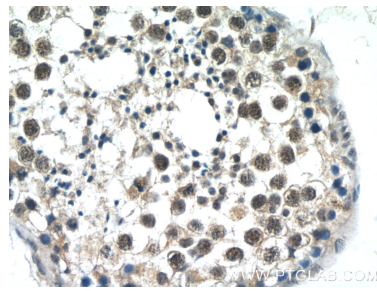
E: proteintech@ptglab.com
W: ptglab.com

This product is exclusively available under Proteintech Group brand and is not available to purchase from any other manufacturer.

Selected Validation Data



human testis tissue were subjected to SDS PAGE followed by western blot with 23166-1-AP (ATXN3L Antibody) at dilution of 1:600 incubated at room temperature for 1.5 hours.



Immunohistochemical analysis of paraffin-embedded human testis tissue slide using 23166-1-AP (ATXN3L Antibody) at dilution of 1:200 (under 40x lens).