

For Research Use Only

A2LD1 Polyclonal ANTIBODY

Catalog Number: 23280-1-AP



Basic Information

Catalog Number:

23280-1-AP

Size:

150UL, Concentration: 387 µg/ml by Bradford method using BSA as the standard;

Source:

Rabbit

Isotype:

IgG

Immunogen Catalog Number:

AG18549

GenBank Accession Number:

BC001077

GeneID (NCBI):

87769

Full Name:

AIG2-like domain 1

Calculated MW:

153 aa, 17 kDa

Observed MW:

17 kDa

Purification Method:

Antigen affinity purification

Recommended Dilutions:

WB 1:500-1:1000

Applications

Tested Applications:

WB, ELISA

Species Specificity:

human, mouse, rat

Positive Controls:

WB: mouse lung tissue, mouse bladder tissue, mouse brain tissue

Background Information

Storage

Storage:

Store at -20°C. Stable for one year after shipment.

Storage Buffer:

PBS with 0.02% sodium azide and 50% glycerol pH 7.3.

Aliquoting is unnecessary for -20°C storage

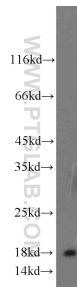
For technical support and original validation data for this product please contact:

T: 1 (888) 4PTGLAB (1-888-478-4522) (toll free in USA), or 1(312) 455-8498 (outside USA)

E: proteintech@ptglab.com
W: ptglab.com

This product is exclusively available under Proteintech Group brand and is not available to purchase from any other manufacturer.

Selected Validation Data



mouse lung tissue were subjected to SDS PAGE followed by western blot with 23280-1-AP (A2LD1 antibody) at dilution of 1:500 incubated at room temperature for 1.5 hours.