

For Research Use Only

# Eg5 Polyclonal antibody

Catalog Number: 23333-1-AP **5 Publications**



## Basic Information

**Catalog Number:**

23333-1-AP

**Size:**

150UL, Concentration: 233 µg/ml by Bradford method using BSA as the standard;

**Source:**

Rabbit

**Isotype:**

IgG

**Immunogen Catalog Number:**

AG18695

**GenBank Accession Number:**

BC136474

**GeneID (NCBI):**

3832

**Full Name:**

kinesin family member 11

**Calculated MW:**

1056 aa, 119 kDa

**Observed MW:**

120-130 kDa

**Purification Method:**

Antigen Affinity purified

**Recommended Dilutions:**

WB 1:1000-1:4000

IP 0.5-4.0 µg for IP and 1:500-1:2000 for WB

IHC 1:20-1:200

IF 1:50-1:500

## Applications

**Tested Applications:**

IF, IHC, IP, WB, ELISA

**Cited Applications:**

IHC, WB

**Species Specificity:**

human

**Cited Species:**

human

**Note-IHC: suggested antigen retrieval with TE buffer pH 9.0; (\*) Alternatively, antigen retrieval may be performed with citrate buffer pH 6.0**

**Positive Controls:**

**WB:** HEK-293 cells, HeLa cells, Jurkat cells, K-562 cells, Raji cells

**IP:** Raji cells,

**IHC:** human lung cancer tissue, human endometrial cancer tissue, human prostate hyperplasia tissue

**IF:** HepG2 cells,

## Background Information

Eg5 is a plus-end-directed microtubule motor encoded by KIF11 gene. It is an essential mitotic kinesin that plays a pivotal role in the formation and maintenance of bipolar spindle during early prometaphase. Eg5 has been implicated in tumourigenesis, and its overexpression has been found in various cancer tissues.

## Notable Publications

Author	Pubmed ID	Journal	Application
Xishan Li	32509165	Am J Transl Res	WB
Fangqiu Fu	32181877	Int J Cancer	IHC
Ernest Terribas	32642733	Neurooncol Adv	WB,IHC

## Storage

**Storage:**

Store at -20°C. Stable for one year after shipment.

**Storage Buffer:**

PBS with 0.02% sodium azide and 50% glycerol pH 7.3.

Aliquoting is unnecessary for -20°C storage

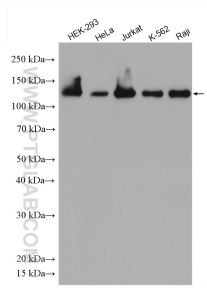
For technical support and original validation data for this product please contact:

T: 1 (888) 4PTGLAB (1-888-478-4522) (toll free in USA), or 1(312) 455-8498 (outside USA)

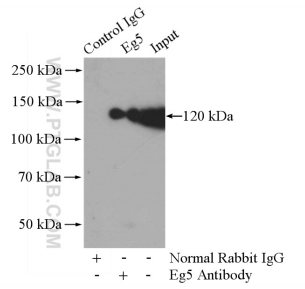
E: [proteintech@ptglab.com](mailto:proteintech@ptglab.com)  
W: [ptglab.com](http://ptglab.com)

**This product is exclusively available under Proteintech Group brand and is not available to purchase from any other manufacturer.**

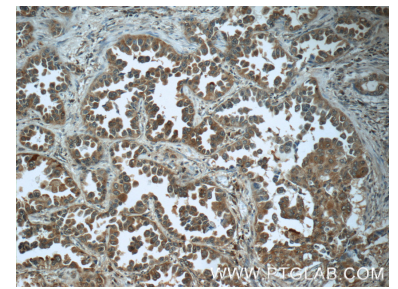
## Selected Validation Data



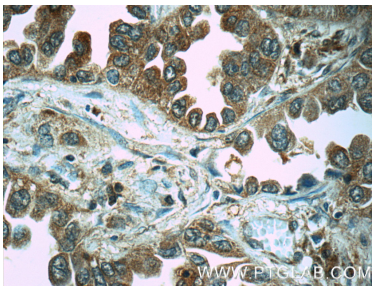
Various lysates were subjected to SDS PAGE followed by western blot with 23333-1-AP (Eg5 antibody) at dilution of 1:4000 incubated at room temperature for 1.5 hours.



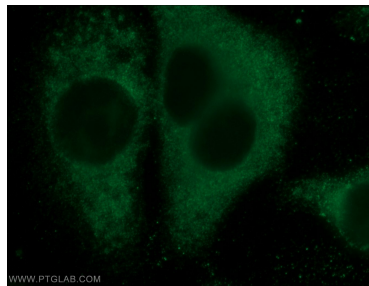
IP Result of anti-Eg5 (IP:23333-1-AP, 4ug; Detection:23333-1-AP 1:1000) with Raji cells lysate 2000ug.



Immunohistochemical analysis of paraffin-embedded human lung cancer tissue slide using 23333-1-AP (Eg5 antibody at dilution of 1:50 (under 10x lens).



Immunohistochemical analysis of paraffin-embedded human lung cancer tissue slide using 23333-1-AP (Eg5 antibody at dilution of 1:50 (under 40x lens).



Immunofluorescent analysis of HepG2 cells using 23333-1-AP (Eg5 antibody) at dilution of 1:50 and Alexa Fluor 488-conjugated AffiniPure Goat Anti-Rabbit IgG(H+L).