

For Research Use Only

FOLR1 Polyclonal antibody

Catalog Number: 23355-1-AP

Featured Product

15 Publications



Basic Information

Catalog Number:

23355-1-AP

Size:

150ul, Concentration: 650 ug/ml by Nanodrop;

Source:

Rabbit

Isotype:

IgG

Immunogen Catalog Number:

AG19959

GenBank Accession Number:

BC002947

GeneID (NCBI):

2348

UNIPROT ID:

P15328

Full Name:

folate receptor 1 (adult)

Calculated MW:

257 aa, 30 kDa

Observed MW:

38 kDa

Purification Method:

Antigen affinity purification

Recommended Dilutions:

WB: 1:2000-1:12000

IHC: 1:50-1:500

IF/ICC: 1:200-1:800

Applications

Tested Applications:

WB, IHC, IF/ICC, ELISA

Cited Applications:

WB, IHC, IF

Species Specificity:

human

Cited Species:

human, mouse, rat, camelus bactrianus

Note-IHC: suggested antigen retrieval with TE buffer pH 9.0; (*) Alternatively, antigen retrieval may be performed with citrate buffer pH 6.0

Positive Controls:

WB: HeLa cells, JAR cells

IHC: human breast cancer tissue,

IF/ICC: HeLa cells,

Background Information

Folate receptor 1 (FOLR1), also known as folate receptor alpha or adult folate-binding protein (FBP), is a 38-kDa glycoprotein belonging to the folate receptor family (PMID:15094207; 23528302). The receptor binds to folate and reduced folic acid derivatives and mediates delivery of 5-methyltetrahydrofolate to the interior of cells. FOLR1 is a secreted protein that either anchors to membranes via a glycosyl-phosphatidylinositol linkage or exists in a soluble form. FOLR1 expression is often limited to the apical surfaces of epithelium in the lung, kidney and choroid plexus but is differentially overexpressed in a variety of solid tumors such as ovarian cancer, non-small cell lung cancer, breast cancer, kidney cancer and high-grade osteosarcoma (PMID: 23528302; 23357463).

Notable Publications

| Author | Pubmed ID | Journal | Application |
|-------------------|-----------|---------------|-------------|
| Xiao Han | 36054333 | Hum Mutat | WB,IF |
| Divinah Manoharan | 33974409 | ACS Nano | WB,IHC |
| Jing Liu | 33970635 | J Am Chem Soc | WB |

Storage

Storage:

Store at -20°C. Stable for one year after shipment.

Storage Buffer:

PBS with 0.02% sodium azide and 50% glycerol, pH7.3

Aliquoting is unnecessary for -20°C storage

*** 20ul sizes contain 0.1% BSA

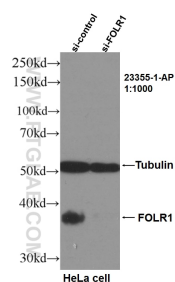
For technical support and original validation data for this product please contact:

T: 1 (888) 4PTGLAB (1-888-478-4522) (toll free in USA), or 1(312) 455-8498 (outside USA)

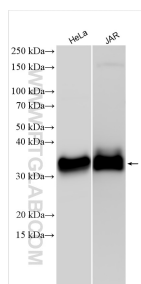
E: proteintech@ptglab.com
W: ptglab.com

This product is exclusively available under Proteintech Group brand and is not available to purchase from any other manufacturer.

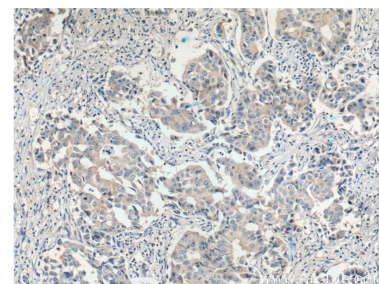
Selected Validation Data



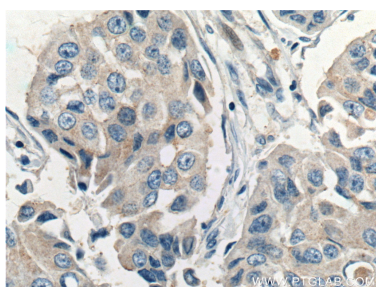
WB result of FOLR1 antibody (23355-1-AP, 1:1000) with si-Control and si-FOLR1 transfected HeLa cells..



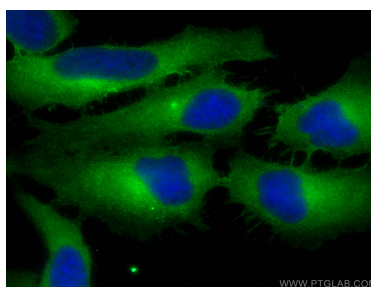
Various lysates were subjected to SDS PAGE followed by western blot with 23355-1-AP (FOLR1 antibody) at dilution of 1:6000 incubated at room temperature for 1.5 hours.



Immunohistochemical analysis of paraffin-embedded human breast cancer tissue slide using 23355-1-AP (FOLR1 Antibody) at dilution of 1:200 (under 10x lens). Heat mediated antigen retrieval with Tris-EDTA buffer (pH 9.0).



Immunohistochemical analysis of paraffin-embedded human breast cancer tissue slide using 23355-1-AP (FOLR1 Antibody) at dilution of 1:200 (under 40x lens). Heat mediated antigen retrieval with Tris-EDTA buffer (pH 9.0).



Immunofluorescent analysis of (-20°C Methanol) fixed HeLa cells using FOLR1 antibody (23355-1-AP) at dilution of 1:400 and CoraLite®488-Conjugated AffiniPure Goat Anti-Rabbit IgG(H+L).