

For Research Use Only

# MAN1A1 Polyclonal antibody

Catalog Number: 23382-1-AP



## Basic Information

### Catalog Number:

23382-1-AP

### Size:

150ul, Concentration: 800 ug/ml by Nanodrop and 387 ug/ml by Bradford method using BSA as the standard;

### Source:

Rabbit

### Isotype:

IgG

### Immunogen Catalog Number:

AG20060

### GenBank Accession Number:

BC065827

### GeneID (NCBI):

4121

### UNIPROT ID:

P33908

### Full Name:

mannosidase, alpha, class 1A, member 1

### Calculated MW:

653 aa, 73 kDa

### Observed MW:

68 kDa

### Purification Method:

Antigen affinity purification

### Recommended Dilutions:

WB 1:1000-1:6000

IP 0.5-4.0 ug for 1.0-3.0 mg of total protein lysate

IHC 1:200-1:800

IF/ICC 1:200-1:800

## Applications

### Tested Applications:

WB, IHC, IF/ICC, FC (Intra), IP, ELISA

### Species Specificity:

human, mouse, rat

**Note-IHC: suggested antigen retrieval with TE buffer pH 9.0; (\*) Alternatively, antigen retrieval may be performed with citrate buffer pH 6.0**

### Positive Controls:

WB: HEK-293 cells, HepG2 cells, MCF-7 cells, mouse liver tissue, rat liver tissue

IP: MCF-7 cells,

IHC: human ovary cancer tissue,

IF/ICC: HepG2 cells,

## Background Information

MAN1A1, also known as HUMM3, HUMM9, MAN9, belongs to the glycosyl hydrolase 47 family. MAN1A1 is a type II transmembrane protein and catalyzes the hydrolysis of three terminal mannose residues from peptide-bound Man(9)-GlcNAc(2) oligosaccharides. MAN1A1 is a tumor-suppressor and low levels of expression of MAN1A1 correlate with poor prognosis in breast cancer patients (PMID: 29381688).

## Storage

### Storage:

Store at -20°C. Stable for one year after shipment.

### Storage Buffer:

PBS with 0.02% sodium azide and 50% glycerol pH 7.3.

Aliquoting is unnecessary for -20°C storage

\*\*\* 20ul sizes contain 0.1% BSA

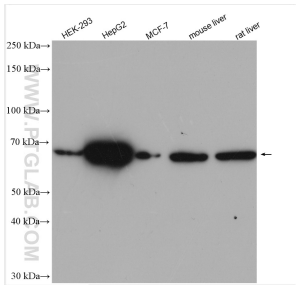
For technical support and original validation data for this product please contact:

T: 1 (888) 4PTGLAB (1-888-478-4522) (toll free in USA), or 1(312) 455-8498 (outside USA)

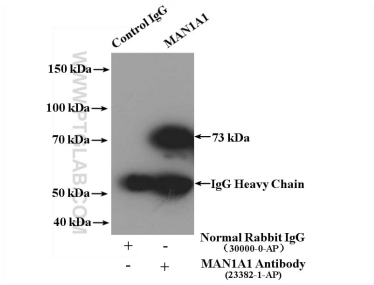
E: [proteintech@ptglab.com](mailto:proteintech@ptglab.com)  
W: [ptglab.com](http://ptglab.com)

This product is exclusively available under Proteintech Group brand and is not available to purchase from any other manufacturer.

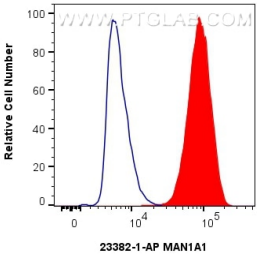
Selected Validation Data



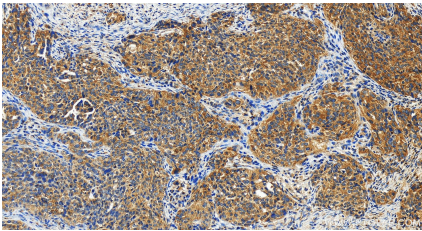
Various lysates were subjected to SDS PAGE followed by western blot with 23382-1-AP (MAN1A1 antibody) at dilution of 1:3000 incubated at room temperature for 1.5 hours.



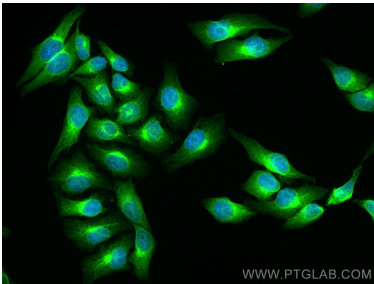
IP result of anti-MAN1A1 (IP:23382-1-AP, 4ug; Detection:23382-1-AP 1:300) with MCF-7 cells lysate 2000ug.



1x10<sup>6</sup> HepG2 cells were intracellularly stained with 0.4 ug MAN1A1 Polyclonal antibody (23382-1-AP) and CoraLite®488-Conjugated AffiniPure Goat Anti-Rabbit IgG(H+L) (SA00013-2)(red), or 0.4 ug Rabbit IgG control Rabbit PolyAb (30000-O-AP) (blue). Cells were fixed with 4% PFA and permeabilized with Flow Cytometry Perm Buffer (PF00011-C).



Immunohistochemical analysis of paraffin-embedded human ovary cancer tissue slide using 23382-1-AP (MAN1A1 antibody) at dilution of 1:400 (under 20x lens). Heat mediated antigen retrieval with Tris-EDTA buffer (pH 9.0).



Immunofluorescent analysis of (4% PFA) fixed HepG2 cells using MAN1A1 antibody (23382-1-AP) at dilution of 1:400 and CoraLite®488-Conjugated AffiniPure Goat Anti-Rabbit IgG(H+L).