

RSK2

Polyclonal ANTIBODY

Catalog Number: 23762-1-AP

Featured Product

4 Publications

Basic Information

Catalog Number:
23762-1-AP

Size:
54 µg/150 µl

Source:
Rabbit

Isotype:
IgG

Purification Method:
Antigen affinity purification

Immunogen Catalog Number:
AG20620

GenBank Accession Number:
BC096301

GeneID (NCBI):
6197

Full Name:
ribosomal protein S6 kinase, 90kDa,
polypeptide 3

Calculated MW:
740aa, 84 kDa

Observed MW:
84 kDa

Recommended Dilutions:

WB 1:500-1:2000

IP 0.5-4.0 µg for IP and 1:500-1:2000 for WB

IHC 1:20-1:200

IF 1:10-1:100

Applications

Tested Applications:

IF, IHC, IP, WB, ELISA

Cited Applications:

WB

Species Specificity:

human, mouse

Cited Species:

human

**Note-IHC: suggested antigen retrieval with
TE buffer pH 9.0; (*) Alternatively, antigen
retrieval may be performed with citrate
buffer pH 6.0**

Positive Controls:

WB : K-562 cells; HepG2 cells, NIH/3T3 cells, MCF-7 cells, mouse heart tissue

IP : K-562 cells;

IHC : human kidney tissue;

IF : HepG2 cells; HUVEC cells, mouse brain tissue

Background Information

RPS6KA3 (Ribosomal protein S6 kinase alpha-3) is also named as ISPK1, MAPKAPK1B, RSK2 and belongs to the protein kinase superfamily. It localizes at the kinetochores under spindle checkpoint conditions, and during mitosis, associated with the centrosomes, the spindle and at the mid-body (PMID:20383198). It is required for epidermal growth factor activated phosphorylation of histone H3, which may cause chromatin remodeling and facilitate gene transcription and may be playing an essential regulatory role in protein synthesis during cell proliferation.

Notable Publications

Author	Pubmed ID	Journal	Application
Ying Zhang	29074436	Int J Biochem Cell Biol	WB
Zhengzheng Su	29341215	Prostate	WB
Yumei Huang	29507620	Theranostics	

Storage

Storage:

Store at -20°C. Stable for one year after shipment.

Storage Buffer:

PBS with 0.02% sodium azide and 50% glycerol pH 7.3.

Aliquoting is unnecessary for -20°C storage

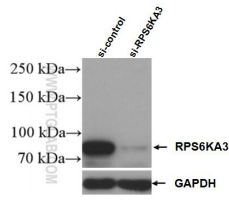
For technical support and original validation data for this product please contact:

T: 1 (888) 4PTGLAB (1-888-478-4522) (toll free in USA), or 1(312) 455-8498 (outside USA)

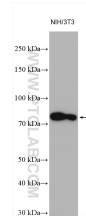
E: proteintech@ptglab.com
W: ptglab.com

This product is exclusively available under Proteintech Group brand and is not available to purchase from any other manufacturer.

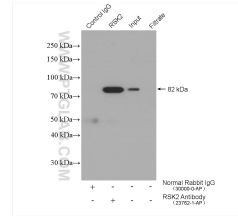
Selected Validation Data



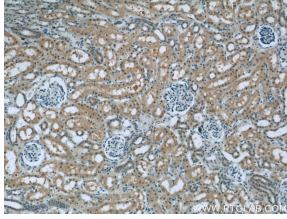
WB result of RSK2 antibody (23762-1-AP; 1:2000; incubated at room temperature for 1.5 hours) with sh-Control and sh-RSK2 transfected K-562 cells



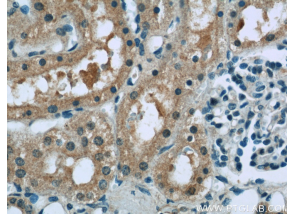
Various lysates were subjected to SDS PAGE followed by western blot with 23762-1-AP (RSK2 antibody) at dilution of 1:4000 incubated at room temperature for 1.5 hours



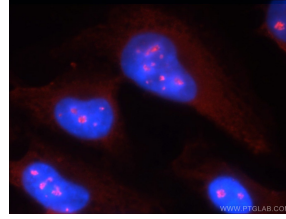
IP result of anti-RSK2(IP:23762-1-AP, 4ug; Detection:23762-1-AP 1:1000) with K-562 cells lysate 4000 ug



Immunohistochemical analysis of paraffin-embedded human kidney tissue slide using 23762-1-AP (RSK2 antibody) at dilution of 1:50 (under 10x lens)



Immunohistochemical analysis of paraffin-embedded human kidney tissue slide using 23762-1-AP (RSK2 antibody) at dilution of 1:50 (under 40x lens)



Immunofluorescent analysis of HepG2 cells using 23762-1-AP (RSK2 antibody) at dilution of 1:25 and Rhodamine-Goat anti-Rabbit IgG