

For Research Use Only

# MME,CD10 Polyclonal antibody



Catalog Number: 23782-1-AP

## Basic Information

**Catalog Number:**

23782-1-AP

**Size:**

150ul , Concentration: 700 µg/ml by Nanodrop and 440 µg/ml by Bradford method using BSA as the standard;

**Source:**

Rabbit

**Isotype:**

IgG

**Immunogen Catalog Number:**

AG20634

**GenBank Accession Number:**

BC101632

**GeneID (NCBI):**

4311

**Full Name:**

membrane metallo-endopeptidase

**Calculated MW:**

750 aa, 86 kDa

**Purification Method:**

Antigen affinity purification

**Recommended Dilutions:**

IHC 1:20-1:200

## Applications

**Tested Applications:**

FC, IHC, ELISA

**Species Specificity:**

human

**Note-IHC: suggested antigen retrieval with TE buffer pH 9.0; (\*) Alternatively, antigen retrieval may be performed with citrate buffer pH 6.0**

**Positive Controls:**

IHC : human kidney tissue, human renal cell carcinoma tissue

## Background Information

MME is also names as neprilysin,CALLA,NEP,SFE,CD10 and belongs to the peptidase M13 family.It is a glycoprotein that is particularly abundant in kidney, where it is present on the brush border of proximal tubules and on glomerular epithelium.CD10 has been considered a useful marker in the diagnosis of renal carcinomas, because of its expression in clear cell and papillary renal cell carcinomas and its absence in chromophobe renal cell carcinomas(PMID:15286660).

## Storage

**Storage:**

Store at -20°C. Stable for one year after shipment.

**Storage Buffer:**

PBS with 0.02% sodium azide and 50% glycerol pH 7.3.

Aliquoting is unnecessary for -20°C storage

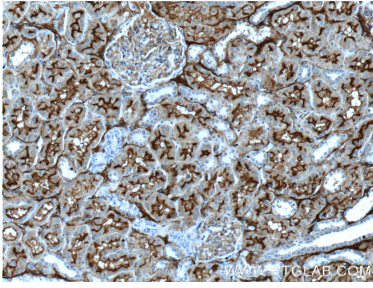
For technical support and original validation data for this product please contact:

T: 1 (888) 4PTGLAB (1-888-478-4522) (toll free in USA), or 1(312) 455-8498 (outside USA)

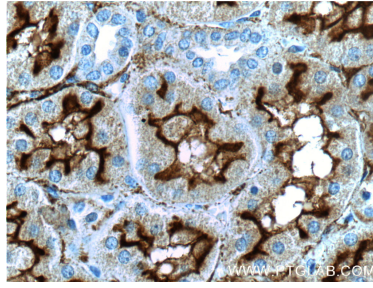
E: [proteintech@ptglab.com](mailto:proteintech@ptglab.com)  
W: [ptglab.com](http://ptglab.com)

**This product is exclusively available under Proteintech Group brand and is not available to purchase from any other manufacturer.**

## Selected Validation Data



Immunohistochemical analysis of paraffin-embedded human kidney tissue slide using 23782-1-AP (CD10, MME Antibody) at dilution of 1:200 (under 10x lens).



Immunohistochemical analysis of paraffin-embedded human kidney tissue slide using 23782-1-AP (CD10, MME Antibody) at dilution of 1:200 (under 40x lens).