

For Research Use Only

# BCHE Polyclonal antibody

Catalog Number: 23854-1-AP **1 Publications**



## Basic Information

<b>Catalog Number:</b> 23854-1-AP	<b>GenBank Accession Number:</b> BC008396	<b>Purification Method:</b> Antigen Affinity purified
<b>Size:</b> 150ul , Concentration: 413 µg/ml by Bradford method using BSA as the standard;	<b>GeneID (NCBI):</b> 590	<b>Recommended Dilutions:</b> WB 1:500-1:1000 IHC 1:20-1:200 IF 1:20-1:200
<b>Source:</b> Rabbit	<b>Full Name:</b> butyrylcholinesterase	
<b>Isotype:</b> IgG	<b>Calculated MW:</b> 602 aa, 68 kDa	
<b>Immunogen Catalog Number:</b> AG20888	<b>Observed MW:</b> 85-90 kDa	

## Applications

<b>Tested Applications:</b> IF, IHC, WB, ELISA	<b>Positive Controls:</b> WB : HeLa cells, HEK-293 cells IHC : human liver tissue, IF : HeLa cells,
<b>Cited Applications:</b> WB	
<b>Species Specificity:</b> human	
<b>Cited Species:</b> human	
<b>Note-IHC: suggested antigen retrieval with TE buffer pH 9.0; (*) Alternatively, antigen retrieval may be performed with citrate buffer pH 6.0</b>	

## Background Information

BCHE(butyrylcholinesterase) is an enzyme expressed in most human tissues. It may have a greater role in cholinergic transmission than previously surmised, making BChE inhibition an important therapeutic goal in Alzheimer's disease(PMID:11848688). BCHE is also named as CHE1 and belongs to the type-B carboxylesterase/lipase family. This is a glycoprotein with the molecular weight from 68 kDa to 90 kDa.

## Notable Publications

Author	Pubmed ID	Journal	Application
Yuanyuan Li	30899600	Nat Biomed Eng	WB

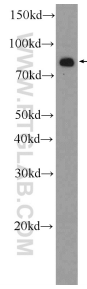
## Storage

**Storage:**  
Store at -20°C. Stable for one year after shipment.  
**Storage Buffer:**  
PBS with 0.02% sodium azide and 50% glycerol pH 7.3.  
Aliquoting is unnecessary for -20°C storage

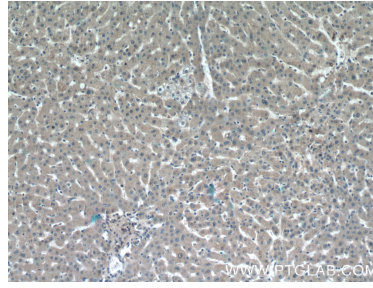
For technical support and original validation data for this product please contact:  
T: 1 (888) 4PTGLAB (1-888-478-4522) (toll free in USA), or 1(312) 455-8498 (outside USA)  
E: proteintech@ptglab.com  
W: ptglab.com

**This product is exclusively available under Proteintech Group brand and is not available to purchase from any other manufacturer.**

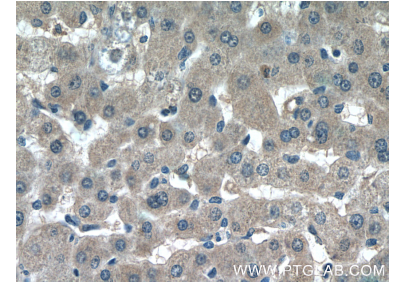
## Selected Validation Data



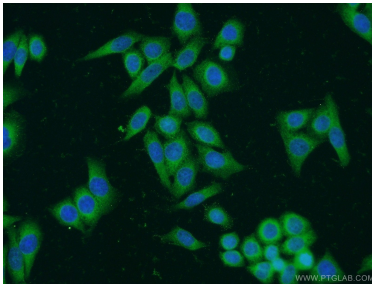
HeLa cells were subjected to SDS PAGE followed by western blot with 23854-1-AP (BCHE Antibody) at dilution of 1:600 incubated at room temperature for 1.5 hours.



Immunohistochemical analysis of paraffin-embedded human liver tissue slide using 23854-1-AP (BCHE Antibody) at dilution of 1:50 (under 10x lens).



Immunohistochemical analysis of paraffin-embedded human liver tissue slide using 23854-1-AP (BCHE Antibody) at dilution of 1:50 (under 40x lens).



Immunofluorescent analysis of HeLa cells using 23854-1-AP (BCHE antibody) at dilution of 1:50 and Alexa Fluor 488-conjugated AffiniPure Goat Anti-Rabbit IgG(H+L).