

For Research Use Only

# PRRX2 Polyclonal antibody

Catalog Number: 23869-1-AP

1 Publications



## Basic Information

Catalog Number:

23869-1-AP

Size:

150ul, Concentration: 800 µg/ml by Nanodrop and 327 µg/ml by Bradford method using BSA as the standard;

Source:

Rabbit

Isotype:

IgG

Immunogen Catalog Number:

AG20917

GenBank Accession Number:

BC014645

GeneID (NCBI):

51450

Full Name:

paired related homeobox 2

Calculated MW:

253 aa, 27 kDa

Observed MW:

27-34 kDa

Purification Method:

Antigen Affinity purified

Recommended Dilutions:

WB 1:500-1:1000

IP 0.5-4.0 µg for IP and 1:500-1:1000 for WB

## Applications

Tested Applications:

IP, WB, ELISA

Cited Applications:

WB

Species Specificity:

human, mouse

Cited Species:

human

Positive Controls:

WB : mouse brain tissue,

IP : mouse brain tissue,

## Background Information

### Notable Publications

| Author  | Pubmed ID | Journal             | Application |
|---------|-----------|---------------------|-------------|
| Yaqi Li | 34350181  | Front Cell Dev Biol | WB          |

## Storage

Storage:

Store at -20°C. Stable for one year after shipment.

Storage Buffer:

PBS with 0.02% sodium azide and 50% glycerol pH 7.3.

Aliquoting is unnecessary for -20°C storage

\*\*\* 20ul sizes contain 0.1% BSA

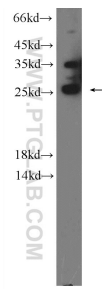
For technical support and original validation data for this product please contact:

T: 1 (888) 4PTGLAB (1-888-478-4522) (toll free in USA), or 1(312) 455-8498 (outside USA)

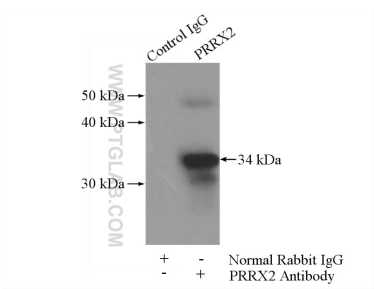
E: [proteintech@ptglab.com](mailto:proteintech@ptglab.com)  
W: [ptglab.com](http://ptglab.com)

This product is exclusively available under Proteintech Group brand and is not available to purchase from any other manufacturer.

Selected Validation Data



mouse brain tissue were subjected to SDS PAGE followed by western blot with 23869-1-AP (PRRX2 Antibody) at dilution of 1:600 incubated at room temperature for 1.5 hours.



IP Result of anti-PRRX2 (IP:23869-1-AP, 4ug; Detection:23869-1-AP 1:500) with mouse brain tissue lysate 3440ug.