

For Research Use Only

CLEC14A Polyclonal antibody

Catalog Number: 23964-1-AP



Basic Information

Catalog Number: 23964-1-AP	GenBank Accession Number: BC031567	Purification Method: Antigen Affinity purified
Size: 150UL, Concentration: 500 µg/ml by Nanodrop and 267 µg/ml by Bradford method using BSA as the standard;	GeneID (NCBI): 161198	Recommended Dilutions: WB 1:500-1:2000
Source: Rabbit	Full Name: C-type lectin domain family 14, member A	
Isotype: IgG	Calculated MW: 490 aa, 52 kDa	
Immunogen Catalog Number: AG21081	Observed MW: 52 kDa	

Applications

Tested Applications: FC, WB, ELISA	Positive Controls: WB: human heart tissue, mouse skeletal muscle tissue
Species Specificity: human, mouse	

Background Information

CLEC14A is a single-pass type I transmembrane protein whose extracellular domain consists of a C-type lectin-like domain (CTLD), a series of EGF-like domains, and a sushi-like domain (PMID: 23644659). CLEC14A is a member of the C-type lectin domain superfamily that also includes endosialin, thrombomodulin and CD93 (PMID: 16336259). It has been reported that CLEC14A is specifically expressed in endothelial cells and mediates cell to cell adhesion (PMID: 21095181). CLEC14A may be involved in tumor angiogenesis (PMID: 21706054; 23644659).

Storage

Storage:
Store at -20°C. Stable for one year after shipment.
Storage Buffer:
PBS with 0.02% sodium azide and 50% glycerol pH 7.3.
Aliquoting is unnecessary for -20°C storage

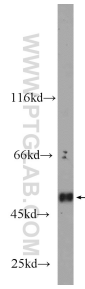
For technical support and original validation data for this product please contact:

T: 1 (888) 4PTGLAB (1-888-478-4522) (toll free in USA), or 1(312) 455-8498 (outside USA)

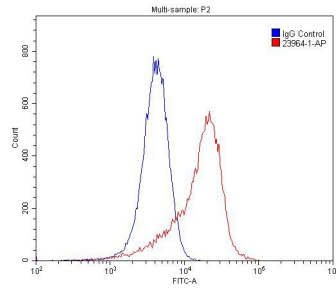
E: proteintech@ptglab.com
W: ptglab.com

This product is exclusively available under Proteintech Group brand and is not available to purchase from any other manufacturer.

Selected Validation Data



human heart tissue were subjected to SDS PAGE followed by western blot with 23964-1-AP (CLEC14A antibody) at dilution of 1:1000 incubated at room temperature for 1.5 hours.



1×10^6 HUVEC cells were stained with 0.2ug CLEC14A antibody (23964-1-AP, red) and control antibody (blue). Fixed with 4% PFA blocked with 3% BSA (30 min). Alexa Fluor 488-conjugated AffiniPure Goat Anti-Rabbit IgG(H+L) with dilution 1:1500.