

For Research Use Only

# Angiotensinogen Polyclonal antibody



Catalog Number: 23972-1-AP

1 Publications

## Basic Information

<b>Catalog Number:</b> 23972-1-AP	<b>GenBank Accession Number:</b> BC011519	<b>Purification Method:</b> Antigen Affinity purified
<b>Size:</b> 150UL, Concentration: 300 µg/ml by Nanodrop and 273 µg/ml by Bradford method using BSA as the standard;	<b>GeneID (NCBI):</b> 183	<b>Recommended Dilutions:</b> WB 1:500-1:2000 IHC 1:50-1:500 IF 1:10-1:100
<b>Source:</b> Rabbit	<b>Full Name:</b> angiotensinogen (serpin peptidase inhibitor, clade A, member 8)	
<b>Isotype:</b> IgG	<b>Calculated MW:</b> 485 aa, 53 kDa	
<b>Immunogen Catalog Number:</b> AG21121	<b>Observed MW:</b> 52 kDa	

## Applications

<b>Tested Applications:</b> IF, IHC, WB, ELISA	<b>Positive Controls:</b> WB : human plasma, IHC : human liver tissue, human hepatocirrhosis tissue, human kidney tissue IF : HepG2 cells,
<b>Cited Applications:</b> IF	
<b>Species Specificity:</b> human	
<b>Cited Species:</b> mouse	
<b>Note-IHC: suggested antigen retrieval with TE buffer pH 9.0; (*) Alternatively, antigen retrieval may be performed with citrate buffer pH 6.0</b>	

## Background Information

Angiotensinogen is a precursor of angiotensin II (Ang II), is expressed and synthesized largely in the liver and is cleaved by the enzyme renin in response to lowered blood pressure. It has a key role in mediating vascular constriction and regulating salt and fluid homeostasis. The resulting product, angiotensin I, is then cleaved by angiotensin converting enzyme (ACE) to generate the physiologically active enzyme angiotensin II. Mutations in this gene are associated with susceptibility to essential hypertension, and can cause renal tubular dysgenesis, a severe disorder of renal tubular development. Defects in this gene have also been associated with non-familial structural atrial fibrillation, and inflammatory bowel disease.

## Notable Publications

Author	Pubmed ID	Journal	Application
Wen Ding	29563333	JCI Insight	IF

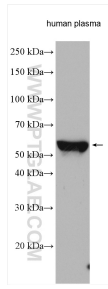
## Storage

**Storage:**  
Store at -20°C. Stable for one year after shipment.  
**Storage Buffer:**  
PBS with 0.02% sodium azide and 50% glycerol pH 7.3.  
Aliquoting is unnecessary for -20°C storage

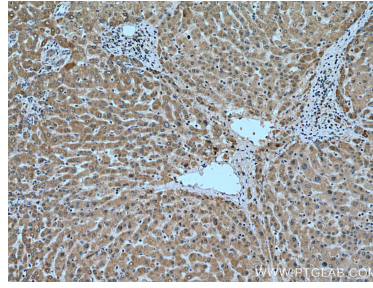
For technical support and original validation data for this product please contact:  
T: 1 (888) 4PTGLAB (1-888-478-4522) (toll free in USA), or 1(312) 455-8498 (outside USA)  
E: proteintech@ptglab.com  
W: ptglab.com

This product is exclusively available under Proteintech Group brand and is not available to purchase from any other manufacturer.

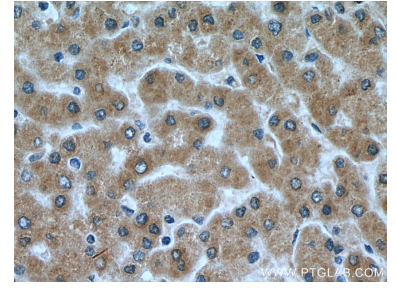
## Selected Validation Data



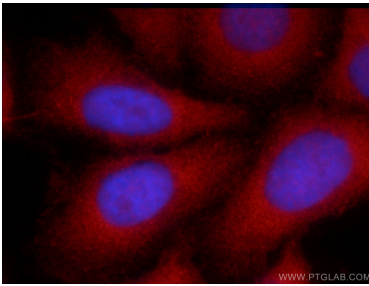
Human plasma were subjected to SDS PAGE followed by western blot with 23972-1-AP (Angiotensinogen antibody) at dilution of 1:1000 incubated at room temperature for 1.5 hours.



Immunohistochemical analysis of paraffin-embedded human liver tissue slide using 23972-1-AP (Angiotensinogen antibody) at dilution of 1:200 (under 10x Lens). Heat mediated antigen retrieval with Tris-EDTA buffer (pH 9.0).



Immunohistochemical analysis of paraffin-embedded human liver tissue slide using 23972-1-AP (Angiotensinogen antibody) at dilution of 1:200 (under 40x Lens). Heat mediated antigen retrieval with Tris-EDTA buffer (pH 9.0).



Immunofluorescent analysis of HepG2 cells using 23972-1-AP (Angiotensinogen antibody) at dilution of 1:25 and Rhodamine-Goat anti-Rabbit IgG.