

For Research Use Only

# Rac1 Polyclonal antibody

Catalog Number: 24072-1-AP

Featured Product

108 Publications



## Basic Information

### Catalog Number:

24072-1-AP

### Size:

150ul, Concentration: 400 ug/ml by Nanodrop;

### Source:

Rabbit

### Isotype:

IgG

### Immunogen Catalog Number:

AG17779

### GenBank Accession Number:

BC004247

### GeneID (NCBI):

5879

### UNIPROT ID:

P63000

### Full Name:

ras-related C3 botulinum toxin substrate 1 (rho family, small GTP binding protein Rac1)

### Calculated MW:

21 kDa

### Observed MW:

21 kDa

### Purification Method:

Antigen affinity purification

### Recommended Dilutions:

WB: 1:200-1:500

IHC: 1:50-1:500

IF/ICC: 1:50-1:500

## Applications

### Tested Applications:

WB, IHC, IF/ICC, ELISA

### Cited Applications:

WB, IHC, IF, IP, colP

### Species Specificity:

human, mouse, rat

### Cited Species:

human, mouse, rat, chicken, hamster

**Note-IHC: suggested antigen retrieval with TE buffer pH 9.0; (\*) Alternatively, antigen retrieval may be performed with citrate buffer pH 6.0**

### Positive Controls:

**WB**: mouse brain tissue, human brain tissue, rat brain tissue

**IHC**: human lung cancer tissue, mouse brain tissue

**IF/ICC**: HeLa cells,

## Background Information

RAC1b, also named as TC25, belongs to the small GTPase superfamily and Rho family. RAC1 is a plasma membrane-associated small GTPase which cycles between active GTP-bound and inactive GDP-bound states. In its active state, it binds to a variety of effector proteins to regulate cellular responses such as secretory processes, phagocytosis of apoptotic cells, epithelial cell polarization and growth-factor induced formation of membrane ruffles.

## Notable Publications

Author	Pubmed ID	Journal	Application
Jennifer L Johnson	36130971	Nat Commun	WB
Yudong Song	30241030	Biomaterials	WB
Yan Qi	34572355	Biomedicines	IP,IF

## Storage

### Storage:

Store at -20°C. Stable for one year after shipment.

### Storage Buffer:

PBS with 0.02% sodium azide and 50% glycerol, pH7.3

Aliquoting is unnecessary for -20°C storage

\*\*\* 20ul sizes contain 0.1% BSA

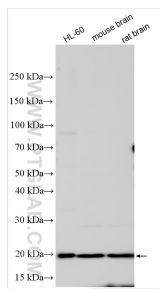
For technical support and original validation data for this product please contact:

T: 1 (888) 4PTGLAB (1-888-478-4522) (toll free in USA), or 1(312) 455-8498 (outside USA)

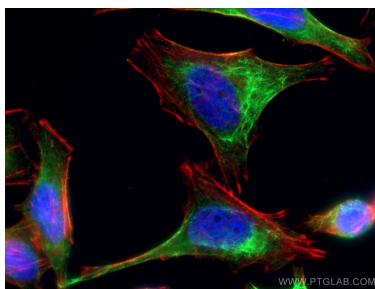
E: proteintech@ptglab.com  
W: ptglab.com

This product is exclusively available under Proteintech Group brand and is not available to purchase from any other manufacturer.

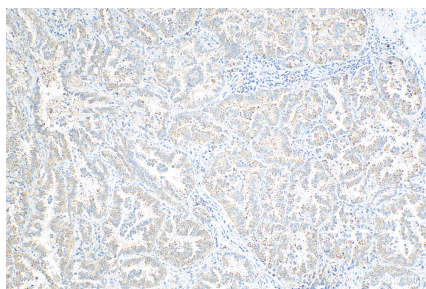
## Selected Validation Data



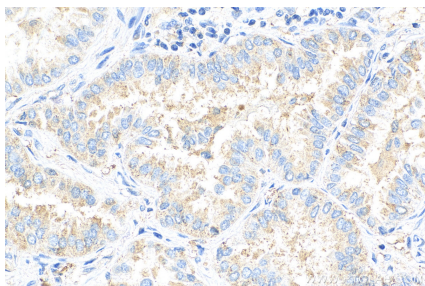
Various lysates were subjected to SDS PAGE followed by western blot with 24072-1-AP (Rac1 antibody) at dilution of 1:1000 incubated at room temperature for 1.5 hours.



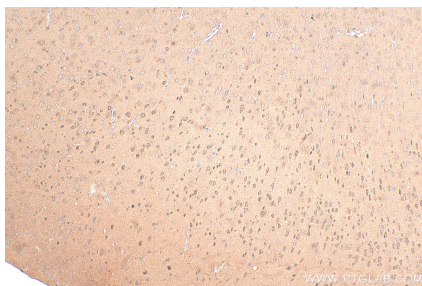
Immunofluorescent analysis of (-20°C Ethanol) fixed HeLa cells using 24072-1-AP (Rac1 antibody), at dilution of 1:200 and CoraLite® 488-Conjugated AffiniPure Goat Anti-Rabbit IgG(H+L).



Immunohistochemical analysis of paraffin-embedded human lung cancer tissue slide using 24072-1-AP (Rac1 antibody) at dilution of 1:200 (under 10x lens). Heat mediated antigen retrieval with Tris-EDTA buffer (pH 9.0).



Immunohistochemical analysis of paraffin-embedded human lung cancer tissue slide using 24072-1-AP (Rac1 antibody) at dilution of 1:200 (under 40x lens). Heat mediated antigen retrieval with Tris-EDTA buffer (pH 9.0).



Immunohistochemical analysis of paraffin-embedded mouse brain tissue slide using 24072-1-AP (Rac1 antibody) at dilution of 1:200 (under 10x lens). Heat mediated antigen retrieval with Tris-EDTA buffer (pH 9.0).