

For Research Use Only

MAGEF1 Polyclonal ANTIBODY

Catalog Number: 24105-1-AP



Basic Information

Catalog Number:

24105-1-AP

Size:

150UL, Concentration: 327 µg/ml by Bradford method using BSA as the standard;

Source:

Rabbit

Isotype:

IgG

Immunogen Catalog Number:

AG21147

GenBank Accession Number:

BC010056

GeneID (NCBI):

64110

Full Name:

melanoma antigen family F, 1

Calculated MW:

35 kDa

Purification Method:

Antigen affinity purification

Recommended Dilutions:

IHC 1:20-1:200

Applications

Tested Applications:

IHC, ELISA

Species Specificity:

human

Note-IHC: suggested antigen retrieval with TE buffer pH 9.0; (*) Alternatively, antigen retrieval may be performed with citrate buffer pH 6.0

Positive Controls:

IHC : human testis tissue,

Background Information

Storage

Storage:

Store at -20°C. Stable for one year after shipment.

Storage Buffer:

PBS with 0.02% sodium azide and 50% glycerol pH 7.3.

Aliquoting is unnecessary for -20°C storage

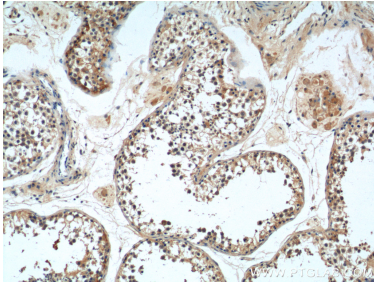
For technical support and original validation data for this product please contact:

T: 1 (888) 4PTGLAB (1-888-478-4522) (toll free in USA), or 1(312) 455-8498 (outside USA)

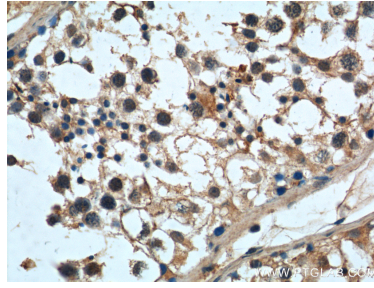
E: proteintech@ptglab.com
W: ptglab.com

This product is exclusively available under Proteintech Group brand and is not available to purchase from any other manufacturer.

Selected Validation Data



Immunohistochemical analysis of paraffin-embedded human testis tissue slide using 24105-1-AP (MAGEF1 Antibody) at dilution of 1:162 (under 10x lens).



Immunohistochemical analysis of paraffin-embedded human testis tissue slide using 24105-1-AP (MAGEF1 Antibody) at dilution of 1:162 (under 40x lens).