

For Research Use Only

Cd2ap Polyclonal antibody

Catalog Number: 24122-1-AP **2 Publications**



Basic Information

Catalog Number: 24122-1-AP	GenBank Accession Number: BC157901	Purification Method: Antigen affinity purification
Size: 150UL, Concentration: 333 µg/ml by Bradford method using BSA as the standard;	GeneID (NCBI): 12488	Recommended Dilutions: WB 1:2000-1:12000 IHC 1:50-1:500
Source: Rabbit	Full Name: CD2-associated protein	
Isotype: IgG	Calculated MW: 637 aa, 70 kDa	
Immunogen Catalog Number: AG21170	Observed MW: 74 kDa	

Applications

Tested Applications: IHC, WB, ELISA	Positive Controls: WB: Jurkat cells, mouse kidney tissue, K-562 cells IHC: human kidney tissue,
Cited Applications: WB	
Species Specificity: human, mouse	
Cited Species: mouse	
Note-IHC: suggested antigen retrieval with TE buffer pH 9.0; (*) Alternatively, antigen retrieval may be performed with citrate buffer pH 6.0	

Background Information

Notable Publications

Author	Pubmed ID	Journal	Application
Soulixay Senouthai	30919150	Inflammation	WB
Chunjian Zhang	33296289	Am J Physiol Cell Physiol	WB

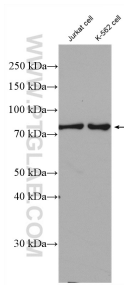
Storage

Storage:
Store at -20°C. Stable for one year after shipment.
Storage Buffer:
PBS with 0.02% sodium azide and 50% glycerol pH 7.3.
Aliquoting is unnecessary for -20°C storage

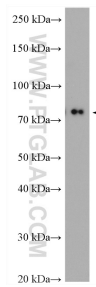
For technical support and original validation data for this product please contact:
T: 1 (888) 4PTGLAB (1-888-478-4522) (toll free in USA), or 1(312) 455-8498 (outside USA)
E: proteintech@ptglab.com
W: ptglab.com

This product is exclusively available under Proteintech Group brand and is not available to purchase from any other manufacturer.

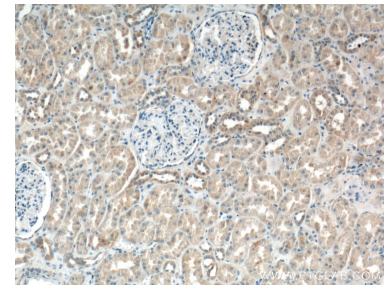
Selected Validation Data



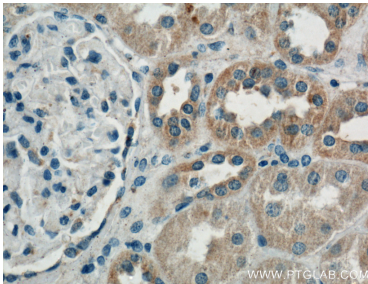
Various lysates were subjected to SDS PAGE followed by western blot with 24122-1-AP (Cd2ap antibody) at dilution of 1:6000 incubated at room temperature for 1.5 hours.



mouse kidney tissue were subjected to SDS PAGE followed by western blot with 24122-1-AP (Cd2ap antibody) at dilution of 1:10000 incubated at room temperature for 1.5 hours.



Immunohistochemical analysis of paraffin-embedded human kidney tissue slide using 24122-1-AP (Cd2ap antibody) at dilution of 1:200 (under 10x lens).



Immunohistochemical analysis of paraffin-embedded human kidney tissue slide using 24122-1-AP (Cd2ap antibody) at dilution of 1:200 (under 40x lens).