

SOD2

Polyclonal ANTIBODY

Catalog Number: 24127-1-AP

54 Publications

Basic Information

Catalog Number:
24127-1-AP

Size:
57 µg/150 µl

Source:
Rabbit

Isotype:
IgG

Purification Method:
Antigen affinity purification

Immunogen Catalog Number:
AG21388

GenBank Accession Number:
BC016934

GeneID (NCBI):
6648

Full Name:
superoxide dismutase 2, mitochondrial

Calculated MW:
25 kDa

Observed MW:
25 kDa

Recommended Dilutions:

WB 1:2000-1:16000

IP 0.5-4.0 µg for IP and 1:500-1:2000 for WB

IHC 1:100-1:400

IF 1:20-1:200

Applications

Tested Applications:

IF, IHC, IP, WB, ELISA

Cited Applications:

IF, IHC, IP, WB

Species Specificity:

human, mouse, rat

Cited Species:

human, mouse, rat, sheep

Note-IHC: suggested antigen retrieval with TE buffer pH 9.0; (*) Alternatively, antigen retrieval may be performed with citrate buffer pH 6.0

Positive Controls:

WB : HeLa cells; MCF-7 cells, DU 145 cells, mouse brain tissue, rat brain tissue

IP : mouse brain tissue;

IHC : human breast cancer tissue; human brain tissue, human small intestine tissue

IF : HUVEC cells;

Background Information

SOD2 (superoxide dismutase 2, mitochondrial) is also named as IPOB, MNSOD, SODM, Mn-SOD and belongs to the iron/manganese superoxide dismutase family. It is a marker of mitochondria, which is restricted to the perinuclear area in a cell with aggregate formation of mutant SOD1 (PMID:12659845). It functions as the first line of antioxidant defense against highly reactive superoxide radicals and it appears to be early predictors for survival in septic patients with MIF (PMID:20863520). It has 2 isoforms with the molecular weight of 25 kDa and 21 kDa.

Notable Publications

Author	Pubmed ID	Journal	Application
Yanan Li	27663303	BMC Microbiol	WB
María Rodríguez-Hidalgo	30228311	Sci Rep	WB
Yang Liu	30221711	Mol Med Rep	WB

Storage

Storage:

Store at -20°C. Stable for one year after shipment.

Storage Buffer:

PBS with 0.02% sodium azide and 50% glycerol pH 7.3.

Aliquoting is unnecessary for -20°C storage

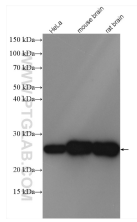
For technical support and original validation data for this product please contact:

T: 1 (888) 4PTGLAB (1-888-478-4522) (toll free in USA), or 1(312) 455-8498 (outside USA)

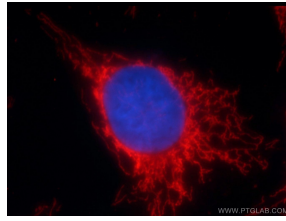
E: proteintech@ptglab.com
W: ptglab.com

This product is exclusively available under Proteintech Group brand and is not available to purchase from any other manufacturer.

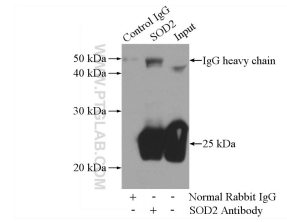
Selected Validation Data



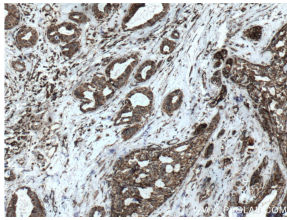
Various lysates were subjected to SDS PAGE followed by western blot with 24127-1-AP (SOD2 antibody) at dilution of 1:8000 incubated at room temperature for 1.5 hours



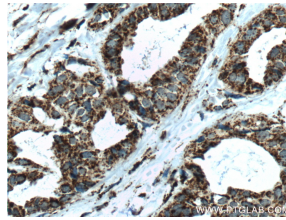
Immunofluorescent analysis of HUVEC cells using 24127-1-AP(SOD2 antibody) at dilution of 1:50 and Rhodamine-Goat anti-Rabbit IgG



IP Result of anti-SOD2 (IP:24127-1-AP, 4ug; Detection:24127-1-AP 1:1000) with mouse brain tissue lysate 4000ug.



Immunohistochemical analysis of paraffin-embedded human breast cancer tissue slide using 24127-1-AP(SOD2 Antibody) at dilution of 1:200 (under 10x lens), heat mediated antigen retrieved with Tris-EDTA buffer(pH9).



Immunohistochemical analysis of paraffin-embedded human breast cancer tissue slide using 24127-1-AP(SOD2 Antibody) at dilution of 1:200 (under 40x lens), heat mediated antigen retrieved with Tris-EDTA buffer(pH9).