

For Research Use Only

CYS1 Polyclonal antibody

Catalog Number: 24133-1-AP



Basic Information

Catalog Number: 24133-1-AP	GenBank Accession Number: BC156921	Purification Method: Antigen Affinity purified
Size: 150ul , Concentration: 600 µg/ml by Nanodrop and 333 µg/ml by Bradford method using BSA as the standard;	GeneID (NCBI): 192668	Recommended Dilutions: IHC 1:50-1:500
Source: Rabbit	Full Name: cystin 1	
Isotype: IgG	Calculated MW: 158 aa, 16 kDa	
Immunogen Catalog Number: AG19743		

Applications

Tested Applications: IHC, ELISA	Positive Controls: IHC : human pancreas cancer tissue,
Species Specificity: human	
Note-IHC: suggested antigen retrieval with TE buffer pH 9.0; (*) Alternatively, antigen retrieval may be performed with citrate buffer pH 6.0	

Background Information

Storage

Storage:
Store at -20°C. Stable for one year after shipment.
Storage Buffer:
PBS with 0.02% sodium azide and 50% glycerol pH 7.3.
Aliquoting is unnecessary for -20°C storage

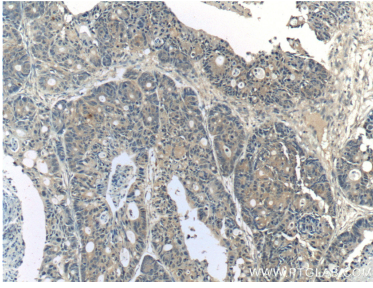
For technical support and original validation data for this product please contact:

T: 1 (888) 4PTGLAB (1-888-478-4522) (toll free in USA), or 1(312) 455-8498 (outside USA)

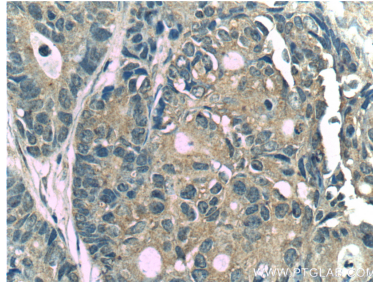
E: proteintech@ptglab.com
W: ptglab.com

This product is exclusively available under Proteintech Group brand and is not available to purchase from any other manufacturer.

Selected Validation Data



Immunohistochemical analysis of paraffin-embedded human pancreas cancer tissue slide using 24133-1-AP (CYS1 Antibody) at dilution of 1:200 (under 10x lens).



Immunohistochemical analysis of paraffin-embedded human pancreas cancer tissue slide using 24133-1-AP (CYS1 Antibody) at dilution of 1:200 (under 40x lens).