

For Research Use Only

# MBL2 Polyclonal ANTIBODY



Catalog Number: 24207-1-AP

Featured Product

1 Publications

## Basic Information

Catalog Number:  
24207-1-AP

Size:  
46 µg/150 µl

Source:  
Rabbit

Isotype:  
IgG

Purification Method:  
Antigen affinity purification  
Immunogen Catalog Number:  
AG21508

GenBank Accession Number:  
BC069338

GeneID (NCBI):  
4153

Full Name:  
mannose-binding lectin (protein C) 2, soluble  
(opsonic defect)

Calculated MW:  
248aa, 26 kDa

Observed MW:  
32 kDa

Recommended Dilutions:  
WB 1:500-1:2000  
IHC 1:20-1:200

## Applications

Tested Applications:  
IHC, WB, ELISA

Cited Applications:  
WB

Species Specificity:  
human

Cited Species:  
human

**Note: suggested antigen retrieval with TE  
buffer pH 9.0; (\*) Alternatively, antigen  
retrieval may be performed with citrate  
buffer pH 6.0**

Positive Controls:

WB : human blood tissue;

IHC : human liver tissue;

## Background Information

### Notable Publications

Author	Pubmed ID	Journal	Application
Chun-Yang Xu	31046434	Cancer Control	WB

## Storage

Storage:  
Store at -20°C. Stable for one year after shipment.  
Storage Buffer:  
PBS with 0.02% sodium azide and 50% glycerol pH 7.3.  
Aliquoting is unnecessary for -20°C storage

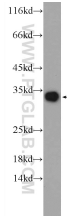
For technical support and original validation data for this  
product please contact:

T: 1 (888) 4PTGLAB (1-888-478-4522) (toll  
free in USA), or 1(312) 455-8498 (outside  
USA)

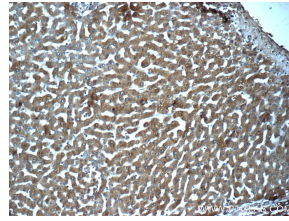
E: [proteintech@ptglab.com](mailto:proteintech@ptglab.com)  
W: [ptglab.com](http://ptglab.com)

This product is exclusively available under  
Proteintech Group brand and is not available to  
purchase from any other manufacturer.

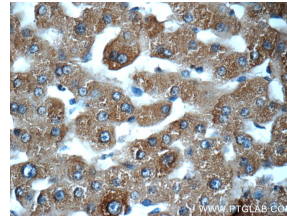
## Selected Validation Data



human blood tissue were subjected to SDS PAGE followed by western blot with 24207-1-AP(MBL2 antibody) at dilution of 1:1000 incubated at room temperature for 1.5 hours



Immunohistochemical analysis of paraffin-embedded human liver tissue slide using 24207-1-AP( MBL2 Antibody) at dilution of 1:50 (under 10x lens)



Immunohistochemical analysis of paraffin-embedded human liver tissue slide using 24207-1-AP( MBL2 Antibody) at dilution of 1:50 (under 40x lens)