

# GJB6

## Polyclonal ANTIBODY

Catalog Number: 24215-1-AP

### Basic Information

<b>Catalog Number:</b> 24215-1-AP	<b>GenBank Accession Number:</b> BC038934	<b>Recommended Dilutions:</b> IHC 1:20-1:200
<b>Size:</b> 50 µg/150 µl	<b>GeneID (NCBI):</b> 10804	
<b>Source:</b> Rabbit	<b>Full Name:</b> gap junction protein, beta 6, 30kDa	
<b>Isotype:</b> IgG	<b>Calculated MW:</b> 261aa, 30 kDa	
<b>Purification Method:</b> Antigen Affinity purified	<b>Observed MW:</b>	
<b>Immunogen Catalog Number:</b> AG21529		

### Applications

<b>Tested Applications:</b> IHC, ELISA	<b>Positive Controls:</b> IHC : human oesophagus tissue; human skin cancer tissue
<b>Species Specificity:</b> human	
<b>Note: suggested antigen retrieval with TE buffer pH 9.0; (*) Alternatively, antigen retrieval may be performed with citrate buffer pH 6.0</b>	

### Background Information

Gap junctions form conduits between adjacent cells that are composed of connexin protein subunits and provide direct intercellular communication pathways allowing rapid exchange of ions and metabolites (PMID: 12126230; 15094343). Connexins are four-pass transmembrane proteins with amino- and carboxy-terminal regions facing the cytoplasm. A connexon is composed of a hexamer of connexins. GJB6 (gap junction beta-6 protein, also known as connexin-30) is a member of the connexin family of proteins. GJB6 is a component of the gap junction networks of the cochlea.

### Notable Publications

Author	Pubmed ID	Journal	Application

### Storage

**Storage:**  
Store at -20°C. Stable for one year after shipment.  
**Storage Buffer:**  
PBS with 0.02% sodium azide and 50% glycerol pH 7.3.  
Aliquoting is unnecessary for -20°C storage

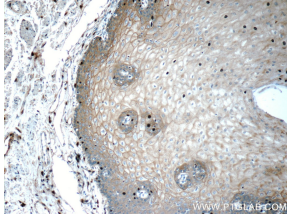
For technical support and original validation data for this product please contact:

T: 1 (888) 4PTGLAB (1-888-478-4522) (toll free in USA), or 1(312) 455-8498 (outside USA)

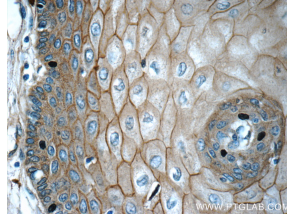
E: [proteintech@ptglab.com](mailto:proteintech@ptglab.com)  
W: [ptglab.com](http://ptglab.com)

This product is exclusively available under Proteintech Group brand and is not available to purchase from any other manufacturer.

## Selected Validation Data



Immunohistochemistry of paraffin-embedded human oesophagus tissue slide using 24215-1-AP1 GJB6 Antibody at dilution of 1:50 (under 10x lens)



Immunohistochemistry of paraffin-embedded human oesophagus tissue slide using 24215-1-AP1 GJB6 Antibody at dilution of 1:50 (under 40x lens)