

For Research Use Only

# F2 Polyclonal antibody

Catalog Number: 24295-1-AP **3 Publications**



## Basic Information

**Catalog Number:**

24295-1-AP

**Size:**

150ul , Concentration: 800 µg/ml by Nanodrop and 400 µg/ml by Bradford method using BSA as the standard;

**Source:**

Rabbit

**Isotype:**

IgG

**Immunogen Catalog Number:**

AG18385

**GenBank Accession Number:**

BC051332

**GeneID (NCBI):**

2147

**Full Name:**

coagulation factor II (thrombin)

**Calculated MW:**

622 aa, 70 kDa

**Observed MW:**

72 kDa

**Purification Method:**

Antigen affinity purification

**Recommended Dilutions:**

WB 1:5000-1:50000

IP 0.5-4.0 ug for IP and 1:5000-1:50000 for WB

IF 1:50-1:500

## Applications

**Tested Applications:**

IF, IP, WB, ELISA

**Cited Applications:**

IF, WB

**Species Specificity:**

human

**Cited Species:**

human, Plasmodium falciparum

**Positive Controls:**

WB : human plasma tissue,

IP : human plasma tissue,

IF : HUVEC cells,

## Background Information

Normal blood coagulation is a complex process, involving a cascade of activation of different plasma proteins, ultimately resulting in the formation of a clot, called fibrin. Factor II, or prothrombin, is one of the components of this chain of plasma proteins involved in blood coagulation. Thrombin is essential in the processes of hemostasis and thrombosis.

## Notable Publications

Author	Pubmed ID	Journal	Application
Takahiro Tougan	29567995	Sci Rep	WB
Takahiro Tougan	32295584	Malar J	WB,IF
Anika Alberts	32286427	Sci Rep	WB

## Storage

**Storage:**

Store at -20°C. Stable for one year after shipment.

**Storage Buffer:**

PBS with 0.02% sodium azide and 50% glycerol pH 7.3.

Aliquoting is unnecessary for -20°C storage

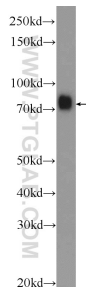
For technical support and original validation data for this product please contact:

T: 1 (888) 4PTGLAB (1-888-478-4522) (toll free in USA), or 1(312) 455-8498 (outside USA)

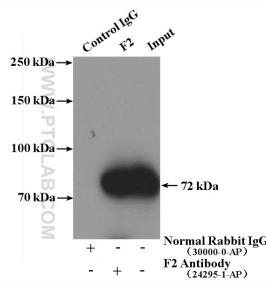
E: [proteintech@ptglab.com](mailto:proteintech@ptglab.com)  
W: [ptglab.com](http://ptglab.com)

**This product is exclusively available under Proteintech Group brand and is not available to purchase from any other manufacturer.**

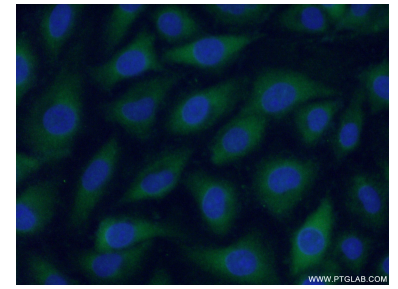
## Selected Validation Data



human plasma were subjected to SDS PAGE followed by western blot with 24295-1-AP (F2 Antibody) at dilution of 1:30000 incubated at room temperature for 1.5 hours.



IP Result of anti-F2 (IP:24295-1-AP, 4ug; Detection:24295-1-AP 1:10000) with human plasma lysate 4000ug.



Immunofluorescent analysis of (-20 Ethanol) fixed HUVEC cells using 24295-1-AP (F2 antibody) at dilution of 1:50 and Alexa Fluor 488-conjugated AffiniPure Goat Anti-Rabbit IgG(H+L).