

For Research Use Only

GPATCH4 Polyclonal antibody

Catalog Number: 24399-1-AP



Basic Information

Catalog Number: 24399-1-AP	GenBank Accession Number: BC040147	Purification Method: Antigen affinity purification
Size: 150ul , Concentration: 300 µg/ml by Nanodrop and 293 µg/ml by Bradford method using BSA as the standard;	GeneID (NCBI): 54865	Recommended Dilutions: WB 1:500-1:2000 IHC 1:20-1:200 IF 1:20-1:200
Source: Rabbit	Full Name: G patch domain containing 4	
Isotype: IgG	Calculated MW: 446 aa, 50 kDa	
Immunogen Catalog Number: AG20095	Observed MW: 50 kDa	

Applications

Tested Applications: IF, IHC, WB, ELISA	Positive Controls: WB : HEK-293 cells, mouse kidney tissue, rat kidney tissue IHC : human liver tissue, human liver cancer tissue IF : HEK-293 cells,
Species Specificity: human, mouse, rat	
Note-IHC: suggested antigen retrieval with TE buffer pH 9.0; (*) Alternatively, antigen retrieval may be performed with citrate buffer pH 6.0	

Background Information

GPATCH4 (G patch domain-containing protein 4) is a 446 amino acid protein containing one G-patch domain. Existing as three alternatively spliced isoforms. This antibody is a rabbit polyclonal antibody raised against the 189 residues of N-terminal of human GPATCH4 protein

Storage

Storage:
Store at -20°C. Stable for one year after shipment.
Storage Buffer:
PBS with 0.02% sodium azide and 50% glycerol pH 7.3.
Aliquoting is unnecessary for -20°C storage

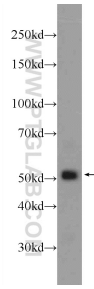
For technical support and original validation data for this product please contact:

T: 1 (888) 4PTGLAB (1-888-478-4522) (toll free in USA), or 1(312) 455-8498 (outside USA)

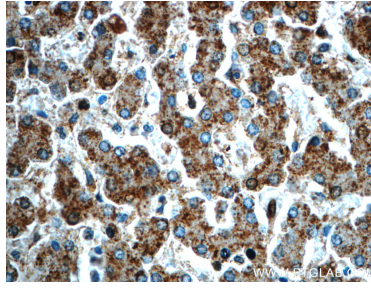
E: proteintech@ptglab.com
W: ptglab.com

This product is exclusively available under Proteintech Group brand and is not available to purchase from any other manufacturer.

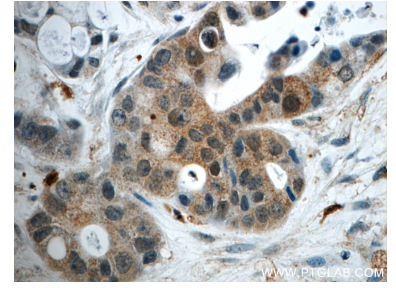
Selected Validation Data



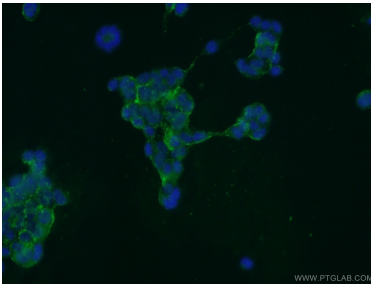
HEK-293 cells were subjected to SDS PAGE followed by western blot with 24399-1-AP (GPATCH4 Antibody) at dilution of 1:1000 incubated at room temperature for 1.5 hours.



Immunohistochemical analysis of paraffin-embedded human liver slide using 24399-1-AP (GPATCH4 Antibody) at dilution of 1:50.



Immunohistochemical analysis of paraffin-embedded human liver cancer slide using 24399-1-AP (GPATCH4 Antibody) at dilution of 1:50.



Immunofluorescent analysis of HEK-293 cells using 24399-1-AP (GPATCH4 antibody) at dilution of 1:50 and Alexa Fluor 488-conjugated AffiniPure Goat Anti-Rabbit IgG(H+L).