

For Research Use Only

# TRIM16 Polyclonal antibody

Catalog Number: 24403-1-AP

Featured Product

9 Publications



## Basic Information

### Catalog Number:

24403-1-AP

### Size:

150ul, Concentration: 1000 ug/ml by Nanodrop and 380 ug/ml by Bradford method using BSA as the standard;

### Source:

Rabbit

### Isotype:

IgG

### Immunogen Catalog Number:

AG21406

### GenBank Accession Number:

BC015674

### GeneID (NCBI):

10626

### UNIPROT ID:

O95361

### Full Name:

tripartite motif-containing 16

### Calculated MW:

64 kDa

### Observed MW:

64 kDa

### Purification Method:

Antigen affinity purification

### Recommended Dilutions:

WB 1:500-1:1000

IP 0.5-4.0 ug for 1.0-3.0 mg of total protein lysate

IHC 1:50-1:500

IF/ICC 1:20-1:200

## Applications

### Tested Applications:

WB, IHC, IF/ICC, IP, ELISA

### Cited Applications:

WB, IF, IHC

### Species Specificity:

human

### Cited Species:

human

### Positive Controls:

WB : HepG2 cells,

IP : HeLa cells,

IHC : human testis tissue, human small intestine tissue

IF/ICC : HepG2 cells,

**Note-IHC: suggested antigen retrieval with TE buffer pH 9.0; (\*) Alternatively, antigen retrieval may be performed with citrate buffer pH 6.0**

## Notable Publications

Author	Pubmed ID	Journal	Application
Yi Zhao	33091421	Exp Cell Res	WB
Shuai Li	36450665	Cell Prolif	WB
Leilei Zheng	31812473	J Genet Genomics	WB,IHC

## Storage

### Storage:

Store at -20°C. Stable for one year after shipment.

### Storage Buffer:

PBS with 0.02% sodium azide and 50% glycerol pH 7.3.

Aliquoting is unnecessary for -20°C storage

\*\*\* 20ul sizes contain 0.1% BSA

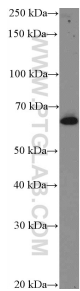
For technical support and original validation data for this product please contact:

T: 1 (888) 4PTGLAB (1-888-478-4522) (toll free in USA), or 1(312) 455-8498 (outside USA)

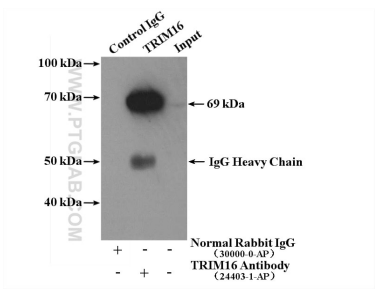
E: [proteintech@ptglab.com](mailto:proteintech@ptglab.com)  
W: [ptglab.com](http://ptglab.com)

This product is exclusively available under Proteintech Group brand and is not available to purchase from any other manufacturer.

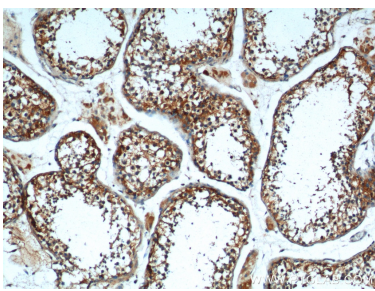
Selected Validation Data



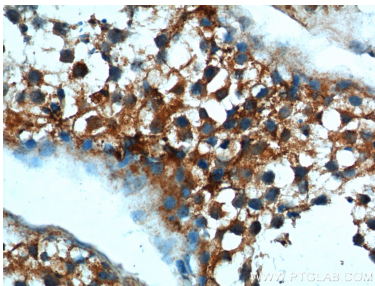
HepG2 cells were subjected to SDS PAGE followed by western blot with 24403-1-AP (TRIM16 Antibody) at dilution of 1:600 incubated at room temperature for 1.5 hours.



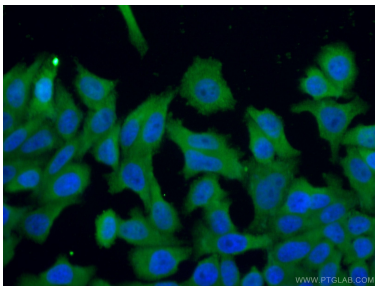
IP result of anti-TRIM16 (IP:24403-1-AP, 4ug; Detection:24403-1-AP 1:300) with HeLa cells lysate 3960ug.



Immunohistochemical analysis of paraffin-embedded human testis tissue slide using 24403-1-AP (TRIM16 Antibody) at dilution of 1:200 (under 10x lens).



Immunohistochemical analysis of paraffin-embedded human testis tissue slide using 24403-1-AP (TRIM16 Antibody) at dilution of 1:200 (under 40x lens).



Immunofluorescent analysis of (4% PFA) fixed HepG2 cells using 24403-1-AP (TRIM16 antibody) at dilution of 1:50 and Alexa Fluor 488-conjugated Goat Anti-Rabbit IgG(H+L).