

For Research Use Only

GEF-H1 Polyclonal ANTIBODY

Catalog Number: 24472-1-AP



Basic Information

Catalog Number:
24472-1-AP

Size:
59 µg/150 µl

Source:
Rabbit

Isotype:
IgG

Purification Method:
Antigen affinity purification

Immunogen Catalog Number:
AG13352

GenBank Accession Number:
BC020567

GeneID (NCBI):
9181

Full Name:
rho/rac guanine nucleotide exchange factor
(GEF) 2

Calculated MW:
112 kDa

Observed MW:
111 kDa

Recommended Dilutions:

WB 1:500-1:2000

IHC 1:50-1:500

Applications

Tested Applications:

IHC, WB, ELISA

Species Specificity:

human

**Note-IHC: suggested antigen retrieval with
TE buffer pH 9.0; (*) Alternatively, antigen
retrieval may be performed with citrate
buffer pH 6.0**

Positive Controls:

WB : A431 cells; RAW 264.7 cells, PC-3 cells, A431
cells, HEK-293T cells, HeLa cells

IHC : human breast cancer tissue; human stomach
cancer tissue

Background Information

Notable Publications

Author	Pubmed ID	Journal	Application
--------	-----------	---------	-------------

Storage

Storage:

Store at -20°C. Stable for one year after shipment.

Storage Buffer:

PBS with 0.1% sodium azide and 50% glycerol pH 7.3.

Aliquoting is unnecessary for -20°C storage

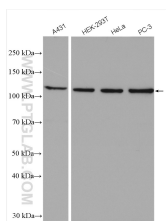
For technical support and original validation data for this
product please contact:

T: 1 (888) 4PTGLAB (1-888-478-4522) (toll
free in USA), or 1(312) 455-8498 (outside
USA)

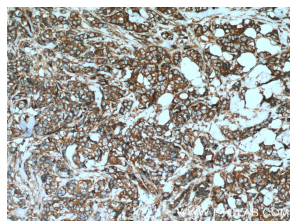
E: proteintech@ptglab.com
W: ptglab.com

This product is exclusively available under
Proteintech Group brand and is not available to
purchase from any other manufacturer.

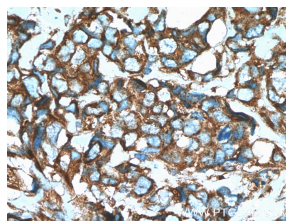
Selected Validation Data



Various lysates were subjected to SDS PAGE followed by western blot with 24472-1-AP (GEF-H1 antibody) at dilution of 1:1000 incubated at room temperature for 1.5 hours



Immunohistochemical analysis of paraffin-embedded human breast cancer tissue slide using 24472-1-AP (GEF-H1 Antibody) at dilution of 1:200 (under 10x lens), heat mediated antigen retrieved with Tris-EDTA buffer (pH9).



Immunohistochemical analysis of paraffin-embedded human breast cancer tissue slide using 24472-1-AP (GEF-H1 Antibody) at dilution of 1:200 (under 40x lens), heat mediated antigen retrieved with Tris-EDTA buffer (pH9).