

For Research Use Only

PTPN6 Polyclonal antibody

Catalog Number: 24546-1-AP

Featured Product

19 Publications



Basic Information

Catalog Number:

24546-1-AP

Size:

150ul, Concentration: 800 ug/ml by Nanodrop;

Source:

Rabbit

Isotype:

IgG

Immunogen Catalog Number:

AG21415

GenBank Accession Number:

BC002523

GeneID (NCBI):

5777

UNIPROT ID:

P29350

Full Name:

protein tyrosine phosphatase, non-receptor type 6

Calculated MW:

597 aa, 68 kDa

Observed MW:

63 kDa

Purification Method:

Antigen affinity purification

Recommended Dilutions:

WB 1:5000-1:50000

IP 0.5-4.0 ug for 1.0-3.0 mg of total protein lysate

IHC 1:50-1:500

IF/ICC 1:50-1:500

Applications

Tested Applications:

WB, IHC, IF/ICC, FC (Intra), IP, ELISA

Cited Applications:

WB, IHC, IF, IP, CoIP

Species Specificity:

human, mouse, rat

Cited Species:

human, mouse

Note-IHC: suggested antigen retrieval with TE buffer pH 9.0; (*) Alternatively, antigen retrieval may be performed with citrate buffer pH 6.0

Positive Controls:

WB: Raji cells, Jurkat cells, HuH-7 cells

IP: Jurkat cells,

IHC: human colon cancer tissue,

IF/ICC: MCF-7 cells,

Background Information

PTPN6 (Tyrosine-protein phosphatase non-receptor type 6) is also named as HCP, PTP1C and belongs to the protein-tyrosine phosphatase family. It regulates muscle INS action in a cell-autonomous manner, further suggesting that the PTPase negatively modulates INS action through down-regulation of both INS signaling to AKT1 and SLC2A4 translocation, as well as SLC2A4 expression (PMID:21952243). It has 4 isoforms produced by alternative splicing.

Notable Publications

Author	Pubmed ID	Journal	Application
Ying Ren	31645658	Acta Pharmacol Sin	WB
Xiaofei Shen	31594861	J Biol Chem	WB
Ighodaro Igbe	29371942	Oncotarget	WB

Storage

Storage:

Store at -20°C. Stable for one year after shipment.

Storage Buffer:

PBS with 0.02% sodium azide and 50% glycerol pH 7.3.

Aliquoting is unnecessary for -20°C storage

*** 20ul sizes contain 0.1% BSA

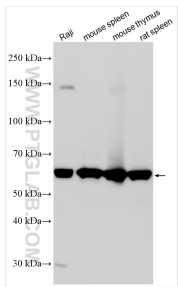
For technical support and original validation data for this product please contact:

T: 1 (888) 4PTGLAB (1-888-478-4522) (toll free in USA), or 1(312) 455-8498 (outside USA)

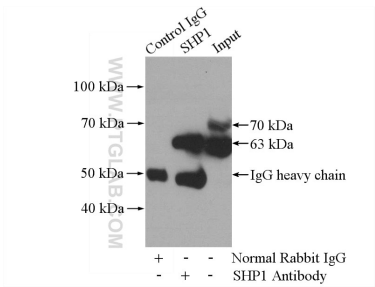
E: proteintech@ptglab.com
W: ptglab.com

This product is exclusively available under Proteintech Group brand and is not available to purchase from any other manufacturer.

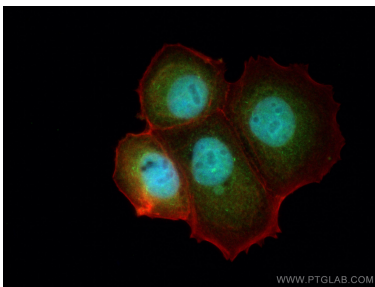
Selected Validation Data



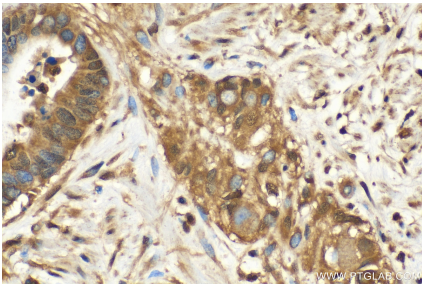
Various lysates were subjected to SDS PAGE followed by western blot with 24546-1-AP (PTPN6 antibody) at dilution of 1:10000 incubated at room temperature for 1.5 hours.



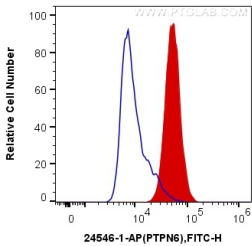
IP result of anti-PTPN6 (IP:24546-1-AP, 4ug; Detection:24546-1-AP 1:600) with Jurkat cells lysate 3600ug.



Immunofluorescent analysis of (4% PFA) fixed MCF-7 cells using PTPN6 antibody (24546-1-AP) at dilution of 1:200 and CoraLite®488-Conjugated Goat Anti-Rabbit IgG(H+L), CL594-Phalloidin (red).



Immunohistochemical analysis of paraffin-embedded human colon cancer tissue slide using 24546-1-AP (PTPN6 antibody) at dilution of 1:200 (under 40x lens). Heat mediated antigen retrieval with Tris-EDTA buffer (pH 9.0).



1X10⁶ MCF-7 cells were intracellularly stained with 0.2 ug Anti-Human PTPN6 (24546-1-AP) and CoraLite®488-Conjugated Goat Anti-Rabbit IgG(H+L) at dilution 1:1000 (red), or 0.2 ug Control Antibody. Cells were fixed with 4% PFA and permeabilized with Flow Cytometry Perm Buffer (PF00011-C).