

For Research Use Only

LRRC18 Polyclonal ANTIBODY



Catalog Number: 24571-1-AP

Basic Information

Catalog Number:

24571-1-AP

Size:

150UL, Concentration: 393 µg/ml by Bradford method using BSA as the standard;

Source:

Rabbit

Isotype:

IgG

Immunogen Catalog Number:

AG20996

GenBank Accession Number:

BC036722

GeneID (NCBI):

474354

Full Name:

leucine rich repeat containing 18

Calculated MW:

261 aa, 30 kDa

Observed MW:

30 kDa

Purification Method:

Antigen affinity purification

Recommended Dilutions:

WB 1:500-1:1000

IP 0.5-4.0 µg for IP and 1:500-1:1000 for WB

IHC 1:20-1:200

Applications

Tested Applications:

IHC, IP, WB, ELISA

Species Specificity:

human, mouse

Note-IHC: suggested antigen retrieval with TE buffer pH 9.0; (*) Alternatively, antigen retrieval may be performed with citrate buffer pH 6.0

Positive Controls:

WB: mouse testis tissue,

IP: mouse testis tissue,

IHC: human testis tissue,

Background Information

Leucine rich repeat containing protein 18 (LRRC18) encodes a 261 amino-acids protein (29.6 kDa), which contains 7 leucine rich repeat and belongs to LRR superfamily. The function of protein is still non-known, but it may be involved in the regulation of spermatogenesis and sperm maturation. The protein localizes in cytoplasm and express in some male reproduction tissues.

Storage

Storage:

Store at -20°C. Stable for one year after shipment.

Storage Buffer:

PBS with 0.1% sodium azide and 50% glycerol pH 7.3.

Aliquoting is unnecessary for -20°C storage

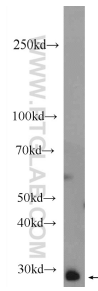
For technical support and original validation data for this product please contact:

T: 1 (888) 4PTGLAB (1-888-478-4522) (toll free in USA), or 1(312) 455-8498 (outside USA)

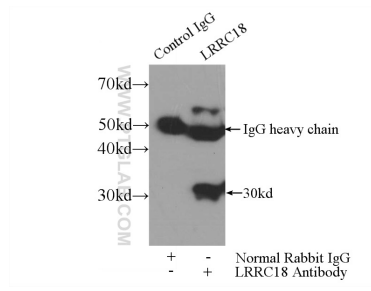
E: proteintech@ptglab.com
W: ptglab.com

This product is exclusively available under Proteintech Group brand and is not available to purchase from any other manufacturer.

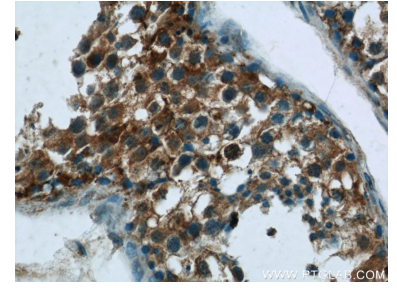
Selected Validation Data



mouse testis tissue were subjected to SDS PAGE followed by western blot with 24571-1-AP (LRRC18 Antibody) at dilution of 1:600 incubated at room temperature for 1.5 hours.



IP Result of anti-LRRC18 (IP:24571-1-AP, 3ug; Detection:24571-1-AP 1:500) with mouse testis tissue lysate 4000ug.



Immunohistochemical analysis of paraffin-embedded human testis tissue slide using 24571-1-AP (LRRC18 Antibody) at dilution of 1:50 (under 40x lens).