

For Research Use Only

SLC37A1 Polyclonal antibody

Catalog Number: 24582-1-AP



Basic Information

Catalog Number:

24582-1-AP

Size:

150ul, Concentration: 500 µg/ml by Nanodrop and 313 µg/ml by Bradford method using BSA as the standard;

Source:

Rabbit

Isotype:

IgG

Immunogen Catalog Number:

AG20180

GenBank Accession Number:

BC152997

GeneID (NCBI):

54020

Full Name:

solute carrier family 37 (glycerol-3-phosphate transporter), member 1

Calculated MW:

533 aa, 58 kDa

Observed MW:

60-66 kDa

Purification Method:

Antigen affinity purification

Recommended Dilutions:

WB 1:500-1:1000

IF 1:10-1:100

Applications

Tested Applications:

IF, WB, ELISA

Species Specificity:

human, mouse

Positive Controls:

WB: MCF-7 cells, mouse kidney tissue

IF: MCF-7 cells,

Background Information

Storage

Storage:

Store at -20°C. Stable for one year after shipment.

Storage Buffer:

PBS with 0.02% sodium azide and 50% glycerol pH 7.3.

Aliquoting is unnecessary for -20°C storage

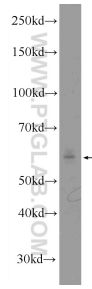
For technical support and original validation data for this product please contact:

T: 1 (888) 4PTGLAB (1-888-478-4522) (toll free in USA), or 1(312) 455-8498 (outside USA)

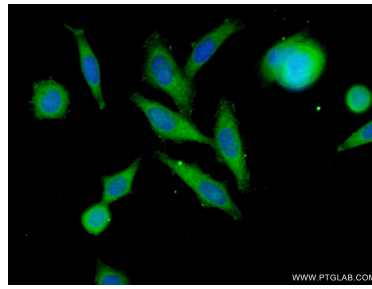
E: proteintech@ptglab.com
W: ptglab.com

This product is exclusively available under Proteintech Group brand and is not available to purchase from any other manufacturer.

Selected Validation Data



MCF-7 cells were subjected to SDS PAGE followed by western blot with 24582-1-AP (SLC37A1 Antibody) at dilution of 1:600 incubated at room temperature for 1.5 hours.



Immunofluorescent analysis of (-20°C Ethanol) fixed MCF-7 cells using 24582-1-AP (SLC37A1 antibody) at dilution of 1:25 and Alexa Fluor 488-conjugated AffiniPure Goat Anti-Rabbit IgG(H+L).