

ADAM17

Polyclonal ANTIBODY

Catalog Number: 24620-1-AP

Basic Information

Catalog Number: 24620-1-AP	GenBank Accession Number: BC136783	Recommended Dilutions: WB 1:500-1:1000 IHC 1:20-1:200
Size: 54 µg/150 µl	GeneID (NCBI): 6868	
Source: Rabbit	Full Name: ADAM metallopeptidase domain 17	
Isotype: IgG	Calculated MW: 824aa, 93 kDa	
Purification Method: Antigen affinity purification	Observed MW: 75 kDa	
Immunogen Catalog Number: AG18273		

Applications

Tested Applications: IHC, WB, ELISA	Positive Controls: WB : U-937 cells; IHC : human pancreas cancer tissue;
Species Specificity: human	
Note: suggested antigen retrieval with TE buffer pH 9.0; (*) Alternatively, antigen retrieval may be performed with citrate buffer pH 6.0	

Background Information

The ADAMs (A Disintegrin And Metalloprotease) are multidomain transmembrane proteins. One of the first ADAMs implicated in membrane shedding is ADAM-17, which is shown to release the active form of tumor necrosis factor (TNF)-α from its precursor (PMID:18238782). ADAM17 is also named as CSVF, TACE. The full length protein has 9 glycosylation sites, a signal peptide, propeptide and 2 isoforms produced by alternative splicing. The 120-kDa form of ADAM-17 is expressed more frequently and at higher levels in primary breast carcinomas compared with normal breast tissue (PMID:17438092).

Notable Publications

Author	Pubmed ID	Journal	Application

Storage

Storage:
Store at -20°C. Stable for one year after shipment.
Storage Buffer:
PBS with 0.1% sodium azide and 50% glycerol pH 7.3.
Aliquoting is unnecessary for -20°C storage

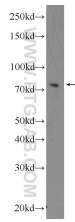
For technical support and original validation data for this product please contact:

T: 1 (888) 4PTGLAB (1-888-478-4522) (toll free in USA), or 1(312) 455-8498 (outside USA)

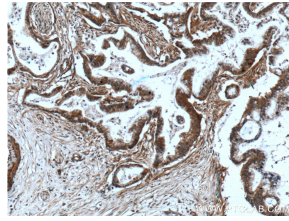
E: proteintech@ptglab.com
W: ptglab.com

This product is exclusively available under Proteintech Group brand and is not available to purchase from any other manufacturer.

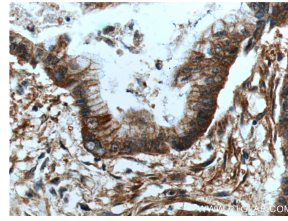
Selected Validation Data



U-937 cells were subjected to SDS PAGE followed by western blot with 24620-1-AP(ADAM17 Antibody) at dilution of 1:600 incubated at room temperature for 1.5 hours



Immunohistochemistry of paraffin-embedded human pancreas cancer tissue slide using 24620-1-AP(ADAM17 Antibody) at dilution of 1:200 (under 10x lens).



Immunohistochemistry of paraffin-embedded human pancreas cancer tissue slide using 24620-1-AP(ADAM17 Antibody) at dilution of 1:200 (under 40x lens).