

For Research Use Only

SGLT2 Polyclonal antibody

Catalog Number: 24654-1-AP

Featured Product

11 Publications



Basic Information

Catalog Number:

24654-1-AP

Size:

150ul, Concentration: 300 µg/ml by Nanodrop and 227 µg/ml by Bradford method using BSA as the standard;

Source:

Rabbit

Isotype:

IgG

Immunogen Catalog Number:

AG19163

GenBank Accession Number:

BC131542

GeneID (NCBI):

6524

Full Name:

solute carrier family 5 (sodium/glucose cotransporter), member 2

Calculated MW:

672 aa, 73 kDa

Observed MW:

69-70 kDa

Purification Method:

Antigen affinity purification

Recommended Dilutions:

WB 1:500-1:1000

IHC 1:20-1:200

Applications

Tested Applications:

IHC, WB, ELISA

Cited Applications:

IF, IHC, WB

Species Specificity:

human, mouse, rat

Cited Species:

human, mouse, rat

Note-IHC: suggested antigen retrieval with TE buffer pH 9.0; (*) Alternatively, antigen retrieval may be performed with citrate buffer pH 6.0

Positive Controls:

WB : A549 cells, mouse lung tissue

IHC : human kidney tissue, rat kidney tissue

Background Information

Sodium-glucose cotransporter 2 (SGLT2), encoded by SLC5A2, utilizes the electrochemical sodium gradient to transport glucose against the cell's internal concentration gradient. Mainly expressed on brush border membrane (BBM) of epithelial cells in the early segment of the proximal tubule, SGLT2 mediates most of the glucose reabsorption by the kidney overall. Inhibition of SGLT2 could improve glucose homeostasis of diabetic patients, which has been considered as a novel strategy for diabetes treatment.

Notable Publications

Author	Pubmed ID	Journal	Application
Nunzia D'Onofrio	34500107	Mol Metab	WB
Hitomi Otomo	33069809	Metabolism	IF
Lei Yang	34856357	Cell Signal	WB

Storage

Storage:

Store at -20°C. Stable for one year after shipment.

Storage Buffer:

PBS with 0.02% sodium azide and 50% glycerol pH 7.3.

Aliquoting is unnecessary for -20°C storage

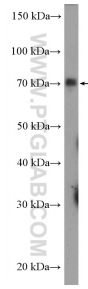
For technical support and original validation data for this product please contact:

T: 1 (888) 4PTGLAB (1-888-478-4522) (toll free in USA), or 1(312) 455-8498 (outside USA)

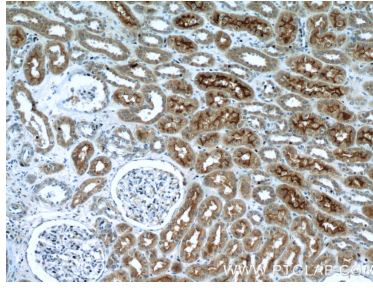
E: proteintech@ptglab.com
W: ptglab.com

This product is exclusively available under Proteintech Group brand and is not available to purchase from any other manufacturer.

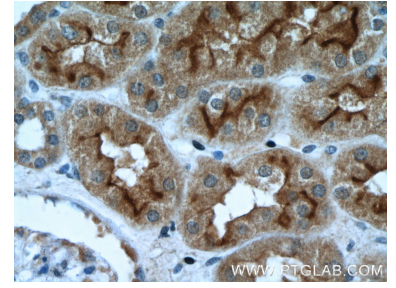
Selected Validation Data



A549 cells were subjected to SDS PAGE followed by western blot with 24654-1-AP (SGLT2 antibody at dilution of 1:600 incubated at room temperature for 1.5 hours.



Immunohistochemical analysis of paraffin-embedded human kidney tissue slide using 24654-1-AP (SGLT2 antibody at dilution of 1:200 (under 10x lens).



Immunohistochemical analysis of paraffin-embedded human kidney tissue slide using 24654-1-AP (SGLT2 antibody at dilution of 1:200 (under 40x lens).