

For Research Use Only

LRPAP1 Polyclonal antibody

Catalog Number: 24662-1-AP

1 Publications



Basic Information

Catalog Number: 24662-1-AP	GenBank Accession Number: BC112067	Purification Method: Antigen affinity purification
Size: 150ul , Concentration: 800 µg/ml by Nanodrop and 320 µg/ml by Bradford method using BSA as the standard;	GeneID (NCBI): 4043	Recommended Dilutions: WB 1:500-1:2000 IHC 1:20-1:200
Source: Rabbit	Full Name: low density lipoprotein receptor-related protein associated protein 1	
Isotype: IgG	Calculated MW: 357 aa, 41 kDa	
Immunogen Catalog Number: AG20304	Observed MW: 39-40 kDa	

Applications

Tested Applications: FC, IHC, WB, ELISA	Positive Controls: WB : MDA-MB-453s cells, HeLa cells IHC : human testis tissue, human kidney tissue
Cited Applications: WB	
Species Specificity: human	
Cited Species: human	
Note-IHC: suggested antigen retrieval with TE buffer pH 9.0; (*) Alternatively, antigen retrieval may be performed with citrate buffer pH 6.0	

Background Information

Notable Publications

Author	Pubmed ID	Journal	Application
Jie You	34469777	Stem Cell Res	WB

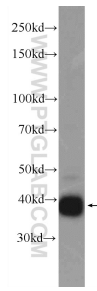
Storage

Storage:
Store at -20°C. Stable for one year after shipment.
Storage Buffer:
PBS with 0.02% sodium azide and 50% glycerol pH 7.3.
Aliquoting is unnecessary for -20°C storage

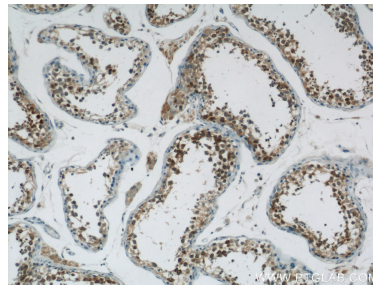
For technical support and original validation data for this product please contact:
T: 1 (888) 4PTGLAB (1-888-478-4522) (toll free in USA), or 1(312) 455-8498 (outside USA)
E: proteintech@ptglab.com
W: ptglab.com

This product is exclusively available under Proteintech Group brand and is not available to purchase from any other manufacturer.

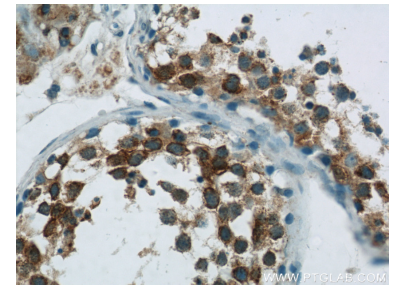
Selected Validation Data



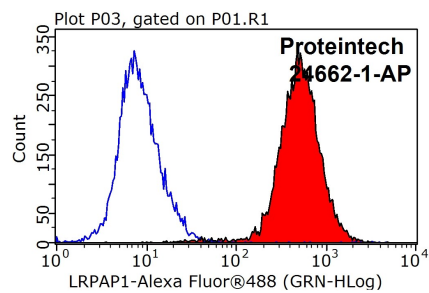
MDA-MB-453s cells were subjected to SDS PAGE followed by western blot with 24662-1-AP (LRPAP1 Antibody) at dilution of 1:1000 incubated at room temperature for 1.5 hours.



Immunohistochemical analysis of paraffin-embedded human testis tissue slide using 24662-1-AP (LRPAP1 Antibody) at dilution of 1:50 (under 10x lens).



Immunohistochemical analysis of paraffin-embedded human testis tissue slide using 24662-1-AP (LRPAP1 Antibody) at dilution of 1:50 (under 40x lens).



1X10⁶ HeLa cells were stained with 0.2ug LRPAP1 antibody (24662-1-AP, red) and control antibody (blue). Fixed with 90% MeOH blocked with 3% BSA (30 min). Alexa Fluor 488-conjugated AffiniPure Goat Anti-Rabbit IgG(H+L) with dilution 1:1000.