

For Research Use Only

# KIF7 Polyclonal antibody

Catalog Number: 24693-1-AP **2 Publications**



## Basic Information

**Catalog Number:**

24693-1-AP

**Size:**

150ul , Concentration: 800 µg/ml by Nanodrop and 387 µg/ml by Bradford method using BSA as the standard;

**Source:**

Rabbit

**Isotype:**

IgG

**Immunogen Catalog Number:**

AG19119

**GenBank Accession Number:**

BC112271

**GeneID (NCBI):**

374654

**Full Name:**

kinesin family member 7

**Calculated MW:**

1343 aa, 151 kDa

**Observed MW:**

150 kDa

**Purification Method:**

Antigen affinity purification

**Recommended Dilutions:**

WB 1:500-1:1000

IP 0.5-4.0 ug for IP and 1:500-1:1000 for WB

## Applications

**Tested Applications:**

IP, WB, ELISA

**Cited Applications:**

IF, WB

**Species Specificity:**

human

**Cited Species:**

human

**Positive Controls:**

WB : HEK-293 cells,

IP : HEK-293 cells,

## Background Information

## Notable Publications

Author	Pubmed ID	Journal	Application
Yue Hu	32945133	Thorac Cancer	WB
Chuan Chen	34162535	Sci Adv	IF

## Storage

**Storage:**

Store at -20°C. Stable for one year after shipment.

**Storage Buffer:**

PBS with 0.02% sodium azide and 50% glycerol pH 7.3.

Aliquoting is unnecessary for -20°C storage

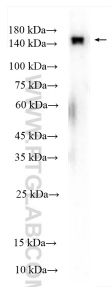
For technical support and original validation data for this product please contact:

T: 1 (888) 4PTGLAB (1-888-478-4522) (toll free in USA), or 1(312) 455-8498 (outside USA)

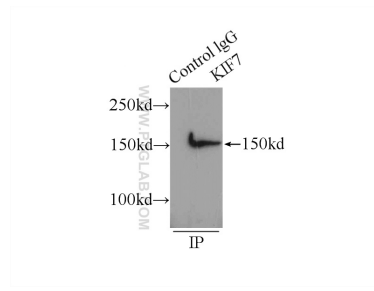
E: [proteintech@ptglab.com](mailto:proteintech@ptglab.com)  
W: [ptglab.com](http://ptglab.com)

**This product is exclusively available under Proteintech Group brand and is not available to purchase from any other manufacturer.**

## Selected Validation Data



HEK-293 cells were subjected to SDS PAGE followed by western blot with 24693-1-AP (KIF7 antibody) at dilution of 1:500 incubated at room temperature for 1.5 hours.



IP Result of anti-KIF7 (IP:24693-1-AP, 5ug; Detection:24693-1-AP 1:500) with HEK-293 cells lysate 1760ug.