

For Research Use Only

GLDC Polyclonal antibody

Catalog Number: 24827-1-AP

Featured Product

5 Publications



Basic Information

Catalog Number:

24827-1-AP

Size:

150ul, Concentration: 600 ug/ml by Nanodrop and 333 ug/ml by Bradford method using BSA as the standard;

Source:

Rabbit

Isotype:

IgG

Immunogen Catalog Number:

AG20410

GenBank Accession Number:

BC111995

GeneID (NCBI):

2731

UNIPROT ID:

P23378

Full Name:

glycine dehydrogenase (decarboxylating)

Calculated MW:

1020 aa, 113 kDa

Observed MW:

113 kDa

Purification Method:

Antigen affinity purification

Recommended Dilutions:

WB: 1:500-1:2000

IP: 0.5-4.0 ug for 1.0-3.0 mg of total protein lysate

IHC: 1:100-1:400

Applications

Tested Applications:

WB, IP, IHC, ELISA

Cited Applications:

WB

Species Specificity:

human, mouse

Cited Species:

human, mouse

Positive Controls:

WB: mouse liver tissue,

IP: mouse liver tissue,

IHC: human liver cancer tissue,

Note-IHC: suggested antigen retrieval with TE buffer pH 9.0; (*) Alternatively, antigen retrieval may be performed with citrate buffer pH 6.0

Background Information

GLDC (Glycine dehydrogenase [decarboxylating], mitochondrial) is also named as GCSP and belongs to the GcvP family. It induces dramatic changes in glycolysis and glycine/serine metabolism that leads to changes in pyrimidine metabolism to regulate cancer cell proliferation (PMID:22225612).

Notable Publications

Author	Pubmed ID	Journal	Application
Shengya Tian	31562192	Life Sci Alliance	WB
Teresa W M Fan	31337706	J Biol Chem	WB
Jiliang Xia	35817773	Nat Commun	WB

Storage

Storage:

Store at -20°C. Stable for one year after shipment.

Storage Buffer:

PBS with 0.02% sodium azide and 50% glycerol, pH7.3

Aliquoting is unnecessary for -20°C storage

*** 20ul sizes contain 0.1% BSA

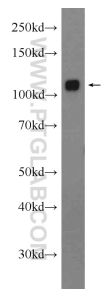
For technical support and original validation data for this product please contact:

T: 1 (888) 4PTGLAB (1-888-478-4522) (toll free in USA), or 1(312) 455-8498 (outside USA)

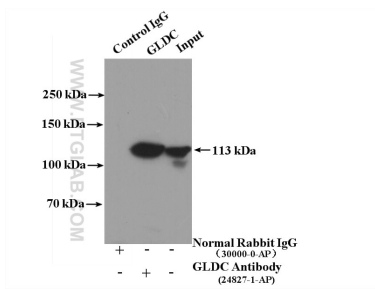
E: proteintech@ptglab.com
W: ptglab.com

This product is exclusively available under Proteintech Group brand and is not available to purchase from any other manufacturer.

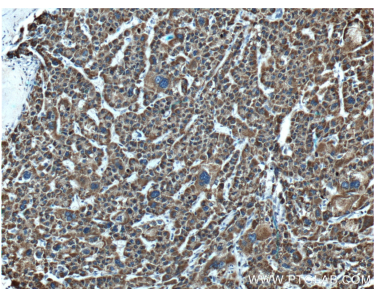
Selected Validation Data



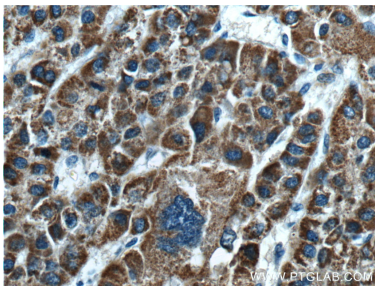
mouse liver tissue were subjected to SDS PAGE followed by western blot with 24827-1-AP (GLDC Antibody) at dilution of 1:1000 incubated at room temperature for 1.5 hours.



IP result of anti-GLDC (IP:24827-1-AP, 4ug; Detection:24827-1-AP 1:1000) with mouse liver tissue lysate 4000ug.



Immunohistochemical analysis of paraffin-embedded human liver cancer tissue slide using 24827-1-AP (GLDC Antibody) at dilution of 1:200 (under 10x lens).



Immunohistochemical analysis of paraffin-embedded human liver cancer tissue slide using 24827-1-AP (GLDC Antibody) at dilution of 1:200 (under 40x lens).