

For Research Use Only

LRCH2 Polyclonal ANTIBODY

Catalog Number: 24866-1-AP



Basic Information

Catalog Number:

24866-1-AP

Size:

150UL, Concentration: 373 µg/ml by Bradford method using BSA as the standard;

Source:

Rabbit

Isotype:

IgG

Immunogen Catalog Number:

AG21701

GenBank Accession Number:

BC125224

GeneID (NCBI):

57631

Full Name:

leucine-rich repeats and calponin homology (CH) domain containing 2

Calculated MW:

765 aa, 85 kDa

Observed MW:

84 kDa

Purification Method:

Antigen affinity purification

Recommended Dilutions:

WB 1:500-1:3000

IHC 1:20-1:200

Applications

Tested Applications:

IHC, WB, ELISA

Species Specificity:

human, mouse

Note-IHC: suggested antigen retrieval with TE buffer pH 9.0; (*) Alternatively, antigen retrieval may be performed with citrate buffer pH 6.0

Positive Controls:

WB: mouse brain tissue, mouse heart tissue, mouse ovary tissue

IHC: human colon tissue, human brain tissue

Background Information

Leucine rich repeat and calponin homology domain containing protein 2 (LRCH2) also named as KIAA1495 is a 765 amino acid protein, which contains one CH domain and nine LRR repeats. The function of LRCH2 is still non-known.

Storage

Storage:

Store at -20°C. Stable for one year after shipment.

Storage Buffer:

PBS with 0.1% sodium azide and 50% glycerol pH 7.3.

Aliquoting is unnecessary for -20°C storage

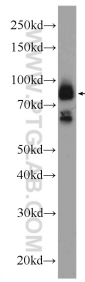
For technical support and original validation data for this product please contact:

T: 1 (888) 4PTGLAB (1-888-478-4522) (toll free in USA), or 1(312) 455-8498 (outside USA)

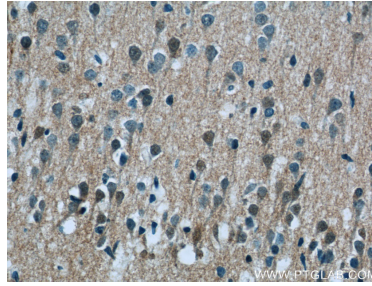
E: proteintech@ptglab.com
W: ptglab.com

This product is exclusively available under Proteintech Group brand and is not available to purchase from any other manufacturer.

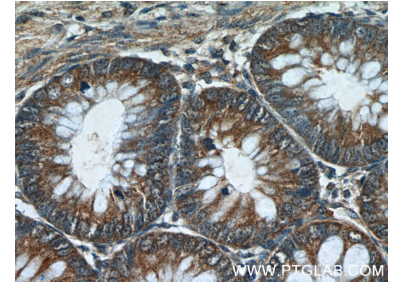
Selected Validation Data



mouse brain tissue were subjected to SDS PAGE followed by western blot with 24866-1-AP (LRCH2 Antibody) at dilution of 1:1500 incubated at room temperature for 1.5 hours.



Immunohistochemical analysis of paraffin-embedded human brain tissue slide using 24866-1-AP (LRCH2 Antibody) at dilution of 1:50 (under 40x lens).



Immunohistochemical analysis of paraffin-embedded human colon tissue slide using 24866-1-AP (LRCH2 Antibody) at dilution of 1:50 (under 40x lens).