

TREX1

Polyclonal ANTIBODY

Catalog Number: 24876-1-AP

1 Publications

Basic Information

Catalog Number: 24876-1-AP	GenBank Accession Number: BC023630	Recommended Dilutions: WB 1:500-1:3000 IP 0.5-4.0 ug for IP and 1:200-1:1000 for WB
Size: 52 µg/150 µl	GeneID (NCBI): 11277	
Source: Rabbit	Full Name: three prime repair exonuclease 1	
Isotype: IgG	Calculated MW: 369aa, 39 kDa	
Purification Method: Antigen affinity purification	Observed MW: 32-39 kDa	
Immunogen Catalog Number: AG18325		

Applications

Tested Applications: IP, WB, ELISA	Positive Controls:
Species Specificity: human	WB : HeLa cells; IP : HeLa cells;
Note: suggested antigen retrieval with TE buffer pH 9.0; (*) Alternatively, antigen retrieval may be performed with citrate buffer pH 6.0	

Background Information

TREX1 (three prime repair exonuclease 1), also known as trophoblast expressed 1, CRV, AGS1, AGS5, DRN3, HERN3 or DNase III, is a member of the exonuclease superfamily and belongs to the TREX1 family. TREX1 may play a role in DNA repair. TREX1 is expressed in thymus, spleen, liver, brain, heart, small intestine and colon. Mutations or defects in the gene encoding TREX1 have been associated with a variety of diseases, including systemic lupus erythematosus, chilblain lupus (CHBL), Aicardi-Goutieres syndrome type 1 (AGS1) and type 5 (AGS5).

Notable Publications

Author	Pubmed ID	Journal	Application
Rie Saito	30561700	J Neuropathol Exp Neurol	

Storage

Storage:
Store at -20°C. Stable for one year after shipment.
Storage Buffer:
PBS with 0.1% sodium azide and 50% glycerol pH 7.3.
Aliquoting is unnecessary for -20°C storage

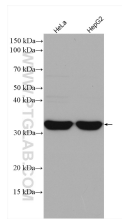
For technical support and original validation data for this product please contact:

T: 1 (888) 4PTGLAB (1-888-478-4522) (toll free in USA), or 1(312) 455-8498 (outside USA)

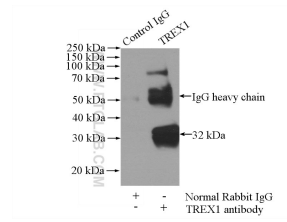
E: proteintech@ptglab.com
W: ptglab.com

This product is exclusively available under Proteintech Group brand and is not available to purchase from any other manufacturer.

Selected Validation Data



Various lysates were subjected to SDS PAGE followed by western blot with 24876-1-AP (TREX1 antibody) at dilution of 1:1500 incubated at room temperature for 1.5 hours



IP Result of anti-TREX1 (IP:24876-1-AP, 4ug; Detection:24876-1-AP 1:300) with HeLa cell lysate 1200ug.