

For Research Use Only

# LRP5 Polyclonal antibody

Catalog Number: 24899-1-AP **3 Publications**



## Basic Information

<b>Catalog Number:</b> 24899-1-AP	<b>GenBank Accession Number:</b> BC150595	<b>Purification Method:</b> Antigen affinity purification
<b>Size:</b> 150ul , Concentration: 207 µg/ml by Bradford method using BSA as the standard;	<b>GeneID (NCBI):</b> 4041	<b>Recommended Dilutions:</b> WB 1:500-1:1000 IHC 1:20-1:200 IF 1:50-1:500
<b>Source:</b> Rabbit	<b>Full Name:</b> low density lipoprotein receptor-related protein 5	
<b>Isotype:</b> IgG	<b>Calculated MW:</b> 1615 aa, 179 kDa	
<b>Immunogen Catalog Number:</b> AG19034	<b>Observed MW:</b> 180-200 kDa	

## Applications

<b>Tested Applications:</b> IF, IHC, WB, ELISA	<b>Positive Controls:</b> WB : HeLa cells, IHC : human liver cancer tissue, human hepatocirrhosis tissue, mouse lung tissue IF : HeLa cells,
<b>Cited Applications:</b> IHC, WB	
<b>Species Specificity:</b> human, mouse	
<b>Cited Species:</b> human, rat	

**Note-IHC: suggested antigen retrieval with TE buffer pH 9.0; (\*) Alternatively, antigen retrieval may be performed with citrate buffer pH 6.0**

## Background Information

Low-density lipoprotein receptor-related protein 5 (LRP5) is a single-pass type I membrane protein with EGF-like and LDLR domains in the extracellular domain. LRP5 and LRP6 act as coreceptors with Frizzled for Wnt. The complex of Wnt-Fzd-LRP5-LRP6 triggers beta-catenin signaling through inducing aggregation of receptor-ligand complexes into ribosome-sized signalsomes. LRP5 plays a key role in skeletal homeostasis and many bone density related diseases are caused by mutations in LRP5 gene.

## Notable Publications

Author	Pubmed ID	Journal	Application
Takafumi Yayama	29102319	J Orthop Sci	IHC
Ying Xu	34425061	Pharm Biol	WB
Meng-Xuan Gui	33420580	Chin J Integr Med	IHC, WB

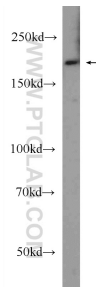
## Storage

**Storage:**  
Store at -20°C. Stable for one year after shipment.  
**Storage Buffer:**  
PBS with 0.02% sodium azide and 50% glycerol pH 7.3.  
Aliquoting is unnecessary for -20°C storage

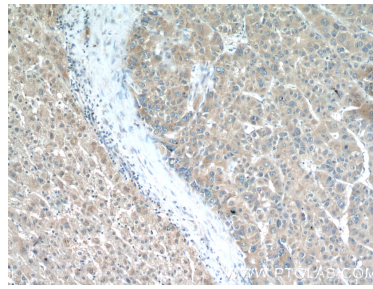
For technical support and original validation data for this product please contact:  
T: 1 (888) 4PTGLAB (1-888-478-4522) (toll free in USA), or 1(312) 455-8498 (outside USA)  
E: proteintech@ptglab.com  
W: ptglab.com

**This product is exclusively available under Proteintech Group brand and is not available to purchase from any other manufacturer.**

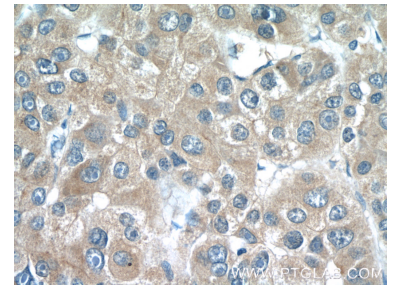
## Selected Validation Data



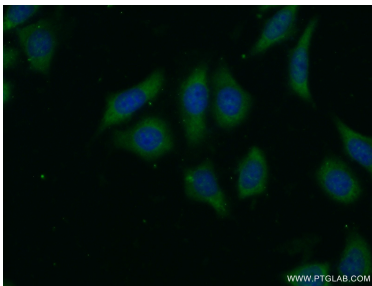
HeLa cells were subjected to SDS PAGE followed by western blot with 24899-1-AP (LRP5 Antibody) at dilution of 1:600 incubated at room temperature for 1.5 hours.



Immunohistochemical analysis of paraffin-embedded human liver cancer tissue slide using 24899-1-AP (LRP5 Antibody) at dilution of 1:50 (under 10x lens).



Immunohistochemical analysis of paraffin-embedded human liver cancer tissue slide using 24899-1-AP (LRP5 Antibody) at dilution of 1:50 (under 40x lens).



Immunofluorescent analysis of (-20 Ethanol) fixed HeLa cells using 24899-1-AP (LRP5 antibody) at dilution of 1:50 and Alexa Fluor 488-conjugated AffiniPure Goat Anti-Rabbit IgG(H+L).