

For Research Use Only

CUX2 Polyclonal ANTIBODY



Catalog Number: 24902-1-AP **1 Publications**

Basic Information

Catalog Number: 24902-1-AP	GenBank Accession Number: BC151245	Purification Method: Antigen affinity purification
Size: 150UL, Concentration: 427 µg/ml by Bradford method using BSA as the standard;	GeneID (NCBI): 23316	Recommended Dilutions: WB 1:200-1:1000
Source: Rabbit	Full Name: cut-like homeobox 2	
Isotype: IgG	Calculated MW: 1486 aa, 162 kDa	
Immunogen Catalog Number: AG18809	Observed MW: 162 kDa	

Applications

Tested Applications: WB, ELISA	Positive Controls: WB: mouse brain tissue,
Cited Applications: WB	
Species Specificity: human, mouse, rat	
Cited Species: mouse	

Background Information

Cut like homeobox 2 (CUX2) also named as, CDP2 or CUTL2, is a 1486 amino acid protein, which contains one homeobox DNA-binding domain and three CUT DNA-binding domains. CUX2 localizes in the nucleus and belongs to the CUT homeobox family. CUX2 may as a transcription factor be involved in neural specification.

Notable Publications

Author	Pubmed ID	Journal	Application
Benjamin D Weger	30344015	Cell Metab	WB

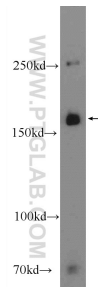
Storage

Storage:
Store at -20°C. Stable for one year after shipment.
Storage Buffer:
PBS with 0.1% sodium azide and 50% glycerol pH 7.3.
Aliquoting is unnecessary for -20°C storage

For technical support and original validation data for this product please contact:
T: 1 (888) 4PTGLAB (1-888-478-4522) (toll free in USA), or 1(312) 455-8498 (outside USA)
E: proteintech@ptglab.com
W: ptglab.com

This product is exclusively available under Proteintech Group brand and is not available to purchase from any other manufacturer.

Selected Validation Data



mouse brain tissue were subjected to SDS PAGE followed by western blot with 24902-1-AP (CUX2 Antibody) at dilution of 1:300 incubated at room temperature for 1.5 hours.