

For Research Use Only

WFDC3 Polyclonal antibody

Catalog Number: 24917-1-AP

Featured Product

2 Publications



Basic Information

Catalog Number:

24917-1-AP

Size:

150ul , Concentration: 400 ug/ml by Nanodrop and 267 ug/ml by Bradford method using BSA as the standard;

Source:

Rabbit

Isotype:

IgG

Immunogen Catalog Number:

AG20207

GenBank Accession Number:

BC148860

GeneID (NCBI):

140686

UNIPROT ID:

Q8IUB2

Full Name:

WAP four-disulfide core domain 3

Calculated MW:

231 aa, 25 kDa

Purification Method:

Antigen affinity purification

Recommended Dilutions:

IHC 1:20-1:200

Applications

Tested Applications:

IHC, ELISA

Cited Applications:

WB, IHC, IF, CoIP

Species Specificity:

human

Cited Species:

human

Note-IHC: suggested antigen retrieval with TE buffer pH 9.0; (*) Alternatively, antigen retrieval may be performed with citrate buffer pH 6.0

Positive Controls:

IHC : human pancreas tissue, human testis tissue

Notable Publications

Author	Pubmed ID	Journal	Application
Xinying Yang	39853769	FASEB J	IHC
Tianqi Liu	37443102	Cell Death Dis	WB,IHC,IF,CoIP

Storage

Storage:

Store at -20°C. Stable for one year after shipment.

Storage Buffer:

PBS with 0.02% sodium azide and 50% glycerol, pH7.3

Aliquoting is unnecessary for -20°C storage

*** 20ul sizes contain 0.1% BSA

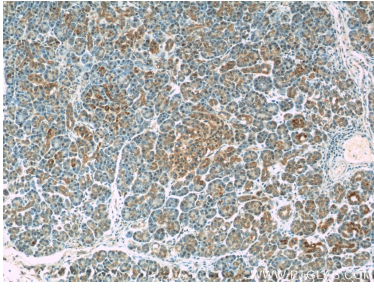
For technical support and original validation data for this product please contact:

T: 1 (888) 4PTGLAB (1-888-478-4522) (toll free in USA), or 1(312) 455-8498 (outside USA)

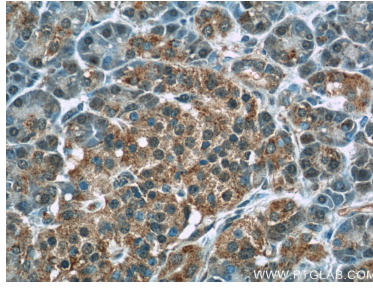
E: proteintech@ptglab.com
W: ptglab.com

This product is exclusively available under Proteintech Group brand and is not available to purchase from any other manufacturer.

Selected Validation Data



Immunohistochemical analysis of paraffin-embedded human pancreas tissue slide using 24917-1-AP (WFDC3 Antibody) at dilution of 1:50 (under 10x lens).



Immunohistochemical analysis of paraffin-embedded human pancreas tissue slide using 24917-1-AP (WFDC3 Antibody) at dilution of 1:50 (under 40x lens).