

For Research Use Only

RELB Polyclonal antibody

Catalog Number: 25027-1-AP **2 Publications**



Basic Information

Catalog Number:

25027-1-AP

Size:

150ul , Concentration: 700 µg/ml by Nanodrop and 213 µg/ml by Bradford method using BSA as the standard;

Source:

Rabbit

Isotype:

IgG

Immunogen Catalog Number:

AG13824

GenBank Accession Number:

BC028013

GeneID (NCBI):

5971

Full Name:

v-rel reticuloendotheliosis viral oncogene homolog B

Calculated MW:

62 kDa

Observed MW:

62 kDa

Purification Method:

Antigen affinity purification

Recommended Dilutions:

WB 1:500-1:2000

IP 0.5-4.0 ug for IP and 1:200-1:1000 for WB

IHC 1:20-1:200

IF 1:10-1:100

Applications

Tested Applications:

FC, IF, IHC, IP, WB, ELISA

Cited Applications:

IHC, WB

Species Specificity:

human, rat

Cited Species:

human

Note-IHC: suggested antigen retrieval with TE buffer pH 9.0; (*) Alternatively, antigen retrieval may be performed with citrate buffer pH 6.0

Positive Controls:

WB : Ramos cells,

IP : Raji cells,

IHC : human lymphoma tissue, human colon cancer tissue

IF : HeLa cells,

Background Information

RELB, also named as Transcription factor RelB, is a 579 amino acid protein, which contains one RHD domain. RELB localizes in the nucleus and cytoplasm. RELB is a pleiotropic transcription factor which is present in almost all cell types and is involved in many biological processes such as inflammation, immunity, differentiation, cell growth, tumorigenesis and apoptosis.

Notable Publications

Author	Pubmed ID	Journal	Application
Xinhua Xiao	28906487	Cell Death Dis	WB
Lu Jiang	26192917	Nat Genet	WB, IHC

Storage

Storage:

Store at -20°C. Stable for one year after shipment.

Storage Buffer:

PBS with 0.02% sodium azide and 50% glycerol pH 7.3.

Aliquoting is unnecessary for -20°C storage

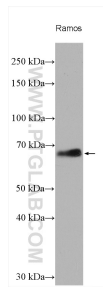
For technical support and original validation data for this product please contact:

T: 1 (888) 4PTGLAB (1-888-478-4522) (toll free in USA), or 1(312) 455-8498 (outside USA)

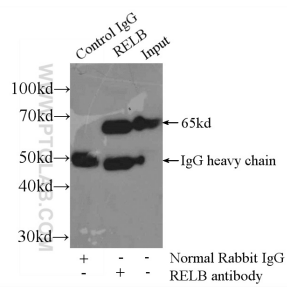
E: proteintech@ptglab.com
W: ptglab.com

This product is exclusively available under Proteintech Group brand and is not available to purchase from any other manufacturer.

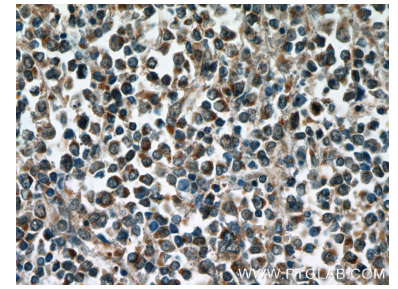
Selected Validation Data



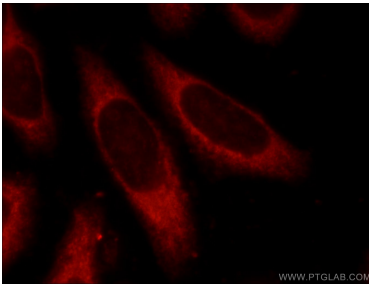
Various lysates were subjected to SDS PAGE followed by western blot with 25027-1-AP (RELB antibody) at dilution of 1:1000 incubated at room temperature for 1.5 hours.



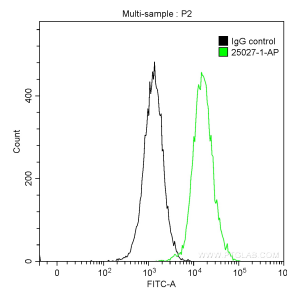
IP Result of anti-RELB (IP:25027-1-AP, 3ug; Detection:25027-1-AP 1:300) with Raji cells lysate 2500ug.



Immunohistochemical analysis of paraffin-embedded human lymphoma tissue slide using 25027-1-AP (RELB Antibody) at dilution of 1:50 (under 40x lens).



Immunofluorescent analysis of HeLa cells using 25027-1-AP (RELB antibody) at dilution of 1:25 and Rhodamine-Goat anti-Rabbit IgG.



1×10^6 Jurkat cells were intracellularly stained with 0.2 ug Anti-Human RELB (25027-1-AP) and CoraLite®488-Conjugated AffiniPure Goat Anti-Rabbit IgG(H+L) at dilution 1:1000 (green), and 0.2 ug Control Antibody. Cells were fixed with 90% MeOH.