

For Research Use Only

NAS1/SLC13A1 Polyclonal ANTIBODY

Catalog Number: 25039-1-AP



Basic Information

Catalog Number:

25039-1-AP

Size:

150UL, Concentration: 273 µg/ml by Bradford method using BSA as the standard;

Source:

Rabbit

Isotype:

IgG

Immunogen Catalog Number:

AG19026

GenBank Accession Number:

BC148686

GeneID (NCBI):

6561

Full Name:

solute carrier family 13 (sodium/sulfate symporters), member 1

Calculated MW:

595 aa, 66 kDa

Observed MW:

66 kDa

Purification Method:

Antigen affinity purification

Recommended Dilutions:

WB 1:500-1:2000

Applications

Tested Applications:

WB, ELISA

Species Specificity:

human, mouse

Positive Controls:

WB: HEK-293 cells, mouse kidney tissue

Background Information

Storage

Storage:

Store at -20°C. Stable for one year after shipment.

Storage Buffer:

PBS with 0.1% sodium azide and 50% glycerol pH 7.3.

Aliquoting is unnecessary for -20°C storage

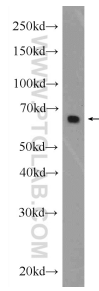
For technical support and original validation data for this product please contact:

T: 1 (888) 4PTGLAB (1-888-478-4522) (toll free in USA), or 1(312) 455-8498 (outside USA)

E: proteintech@ptglab.com
W: ptglab.com

This product is exclusively available under Proteintech Group brand and is not available to purchase from any other manufacturer.

Selected Validation Data



HEK-293 cells were subjected to SDS PAGE followed by western blot with 25039-1-AP (NAS1/SLC13A1 antibody at dilution of 1:1000 incubated at room temperature for 1.5 hours.