

For Research Use Only

# WDFY3 / ALFY Polyclonal antibody

Catalog Number: 25134-1-AP



## Basic Information

<b>Catalog Number:</b> 25134-1-AP	<b>GenBank Accession Number:</b> BC013377	<b>Purification Method:</b> Antigen affinity purification
<b>Size:</b> 150ul , Concentration: 900 ug/ml by Nanodrop and 433 ug/ml by Bradford method using BSA as the standard;	<b>GeneID (NCBI):</b> 23001	<b>Recommended Dilutions:</b> IHC 1:200-1:800
<b>Source:</b> Rabbit	<b>UNIPROT ID:</b> Q8IZQ1	
<b>Isotype:</b> IgG	<b>Full Name:</b> WD repeat and FYVE domain containing 3	
<b>Immunogen Catalog Number:</b> AG18393	<b>Calculated MW:</b> 3526 aa, 395 kDa	

## Applications

<b>Tested Applications:</b> IHC, ELISA	<b>Positive Controls:</b> IHC : human breast cancer tissue, human ovary tumor tissue
<b>Species Specificity:</b> human	
<b>Note-IHC: suggested antigen retrieval with TE buffer pH 9.0; (*) Alternatively, antigen retrieval may be performed with citrate buffer pH 6.0</b>	

## Background Information

WDFY3 also called ALFY, is a phosphatidylinositol 3-phosphate-binding protein that functions as a master conductor for aggregate clearance by autophagy. This protein shuttles from the nuclear membrane to colocalize with aggregated proteins, where it complexes with other autophagic components to achieve macroautophagy-mediated clearance of these aggregated proteins. However, it is not necessary for starvation-induced macroautophagy.

## Storage

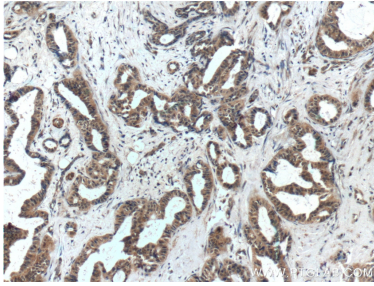
**Storage:**  
Store at -20°C. Stable for one year after shipment.  
**Storage Buffer:**  
PBS with 0.02% sodium azide and 50% glycerol, pH7.3  
Aliquoting is unnecessary for -20°C storage

\*\*\* 20ul sizes contain 0.1% BSA

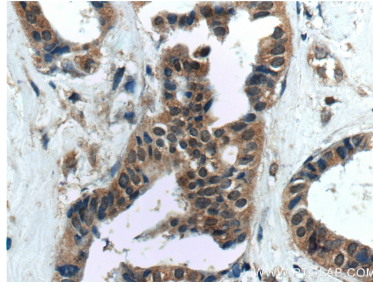
For technical support and original validation data for this product please contact:  
T: 1 (888) 4PTGLAB (1-888-478-4522) (toll free in USA), or 1(312) 455-8498 (outside USA)  
E: [proteintech@ptglab.com](mailto:proteintech@ptglab.com)  
W: [ptglab.com](http://ptglab.com)

This product is exclusively available under Proteintech Group brand and is not available to purchase from any other manufacturer.

## Selected Validation Data



Immunohistochemical analysis of paraffin-embedded human breast cancer tissue slide using 25134-1-AP (WDFY3 / ALFY antibody at dilution of 1:400 (under 10x lens).



Immunohistochemical analysis of paraffin-embedded human breast cancer tissue slide using 25134-1-AP (WDFY3 / ALFY antibody at dilution of 1:400 (under 40x lens).