

For Research Use Only

ATG2B Polyclonal ANTIBODY



Catalog Number: 25155-1-AP

Featured Product

2 Publications

Basic Information

Catalog Number:
25155-1-AP

Size:
38 µg/150 µl

Source:
Rabbit

Isotype:
IgG

Purification Method:
Antigen affinity purification

Immunogen Catalog Number:
AG18412

GenBank Accession Number:
BC015016

GeneID (NCBI):
55102

Full Name:
ATG2 autophagy related 2 homolog B (S. cerevisiae)

Calculated MW:
2078aa, 233 kDa

Observed MW:
240-250 kDa

Recommended Dilutions:

WB 1:500-1:1000

IHC 1:50-1:500

IF 1:10-1:100

Applications

Tested Applications:

IF, IHC, WB, ELISA

Cited Applications:

WB

Species Specificity:

human

Cited Species:

human

Note-IHC: suggested antigen retrieval with TE buffer pH 9.0; (*) Alternatively, antigen retrieval may be performed with citrate buffer pH 6.0

Positive Controls:

WB : HeLa cells;

IHC : human pancreas cancer tissue; human stomach tissue

IF : HepG2 cells;

Background Information

Notable Publications

Author	Pubmed ID	Journal	Application
Jing-Xiang Zheng	28820312	Autophagy	WB
Zhenyuan Tang	31412244	Cell Rep	WB

Storage

Storage:

Store at -20°C. Stable for one year after shipment.

Storage Buffer:

PBS with 0.1% sodium azide and 50% glycerol pH 7.3.

Aliquoting is unnecessary for -20°C storage

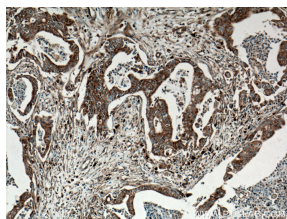
For technical support and original validation data for this product please contact:

T: 1 (888) 4PTGLAB (1-888-478-4522) (toll free in USA), or 1(312) 455-8498 (outside USA)

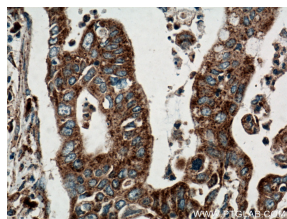
E: proteintech@ptglab.com
W: ptglab.com

This product is exclusively available under Proteintech Group brand and is not available to purchase from any other manufacturer.

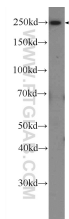
Selected Validation Data



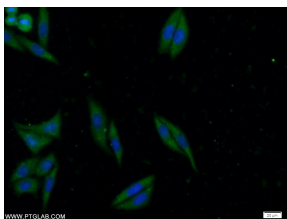
Immunohistochemical analysis of paraffin-embedded human pancreas cancer tissue slide using 25155-1-AP(ATG2B antibody) at dilution of 1:200 (under 10x lens) heat mediated antigen retrieved with Tris-EDTA buffer(pH9).



Immunohistochemical analysis of paraffin-embedded human pancreas cancer tissue slide using 25155-1-AP(ATG2B antibody) at dilution of 1:200 (under 40x lens) heat mediated antigen retrieved with Tris-EDTA buffer(pH9).



HeLa cells were subjected to SDS PAGE followed by western blot with 25155-1-AP(ATG2B Antibody) at dilution of 1:600 incubated at room temperature for 1.5 hours



Immunofluorescent analysis of HepG2 cells using 25155-1-AP(ATG2B antibody) at dilution of 1:25 and Alexa Fluor 488-conjugated AffiniPure Goat Anti-Rabbit IgG(H+L)