

For Research Use Only

SENP1 Polyclonal antibody

Catalog Number: 25349-1-AP

Featured Product

4 Publications



Basic Information

Catalog Number:

25349-1-AP

Size:

150ul, Concentration: 450 µg/ml by Nanodrop and 300 µg/ml by Bradford method using BSA as the standard;

Source:

Rabbit

Isotype:

IgG

Immunogen Catalog Number:

AG18028

GenBank Accession Number:

BC045639

GeneID (NCBI):

29843

Full Name:

SUMO1/sentrin specific peptidase 1

Calculated MW:

644 aa, 73 kDa

Observed MW:

73 kDa

Purification Method:

Antigen affinity purification

Recommended Dilutions:

WB 1:500-1:2000

IP 0.5-4.0 ug for IP and 1:500-1:2000 for WB

IHC 1:20-1:200

Applications

Tested Applications:

IHC, IP, WB, ELISA

Cited Applications:

IHC, WB

Species Specificity:

human

Cited Species:

human

Note-IHC: suggested antigen retrieval with TE buffer pH 9.0; (*) Alternatively, antigen retrieval may be performed with citrate buffer pH 6.0

Positive Controls:

WB: HepG2 cells, HeLa cells, HL-60 cells, Jurkat cells

IP: Jurkat cells,

IHC: human ovary tissue, human liver tissue, human testis tissue

Background Information

Notable Publications

Author	Pubmed ID	Journal	Application
Fang Xianjun	34049792	J Pharmacol Sci	WB
Xue-Song Xu	33686740	Cell Prolif	WB
Mingyue Zhou	33686713	Cancer Med	WB, IHC

Storage

Storage:

Store at -20°C. Stable for one year after shipment.

Storage Buffer:

PBS with 0.02% sodium azide and 50% glycerol pH 7.3.

Aliquoting is unnecessary for -20°C storage

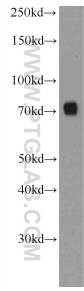
For technical support and original validation data for this product please contact:

T: 1 (888) 4PTGLAB (1-888-478-4522) (toll free in USA), or 1(312) 455-8498 (outside USA)

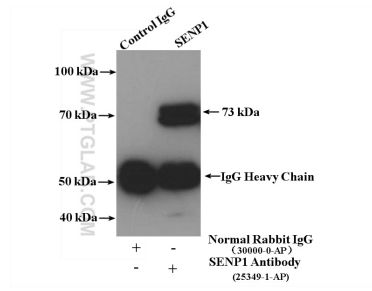
E: proteintech@ptglab.com
W: ptglab.com

This product is exclusively available under Proteintech Group brand and is not available to purchase from any other manufacturer.

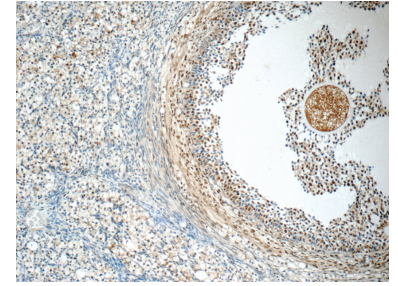
Selected Validation Data



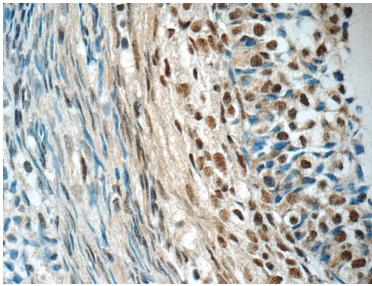
HepG2 cells were subjected to SDS PAGE followed by western blot with 25349-1-AP (SEN1 Antibody) at dilution of 1:1000 incubated at room temperature for 1.5 hours.



IP Result of anti-SEN1 (IP:25349-1-AP, 4ug; Detection:25349-1-AP 1:1000) with Jurkat cells lysate 3600ug.



Immunohistochemical analysis of paraffin-embedded human ovary tissue slide using 25349-1-AP (SEN1 Antibody) at dilution of 1:50 (under 10x lens).



Immunohistochemical analysis of paraffin-embedded human ovary tissue slide using 25349-1-AP (SEN1 Antibody) at dilution of 1:50 (under 40x lens).