

For Research Use Only

FAM20C Polyclonal antibody

Catalog Number: 25395-1-AP

6 Publications



Basic Information

Catalog Number:

25395-1-AP

Size:

150ul, Concentration: 1000 ug/ml by Nanodrop and 360 ug/ml by Bradford method using BSA as the standard;

Source:

Rabbit

Isotype:

IgG

Immunogen Catalog Number:

AG22061

GenBank Accession Number:

BC040074

GeneID (NCBI):

56975

UNIPROT ID:

Q8IXL6

Full Name:

family with sequence similarity 20, member C

Calculated MW:

584 aa, 66 kDa

Purification Method:

Antigen affinity purification

Recommended Dilutions:

IHC 1:50-1:500

Applications

Tested Applications:

IHC, ELISA

Cited Applications:

WB, IHC

Species Specificity:

human, mouse, rat

Cited Species:

human, mouse, rat, monkey

Note-IHC: suggested antigen retrieval with TE buffer pH 9.0; (*) Alternatively, antigen retrieval may be performed with citrate buffer pH 6.0

Positive Controls:

IHC : human kidney tissue, human ovary tissue

Background Information

FAM20C, also named as Golgi-enriched fraction casein kinase or Dentin matrix protein 4, is a 584 amino acid protein, which belongs to the FAM20 family. FAM20C is widely expressed. FAM20C as a Calcium-binding kinase that phosphorylates the caseins and several secreted proteins implicated in biomineralization, including the secretory calcium binding phosphoproteins (SCPP).

Notable Publications

Author	Pubmed ID	Journal	Application
Elena Tibaldi	31914633	FASEB J	WB, IHC
Toshiyasu Koike	36572689	Nat Commun	WB
Yingying Lu	39647747	Int J Biol Macromol	WB

Storage

Storage:

Store at -20°C. Stable for one year after shipment.

Storage Buffer:

PBS with 0.02% sodium azide and 50% glycerol pH 7.3.

Aliquoting is unnecessary for -20°C storage

*** 20ul sizes contain 0.1% BSA

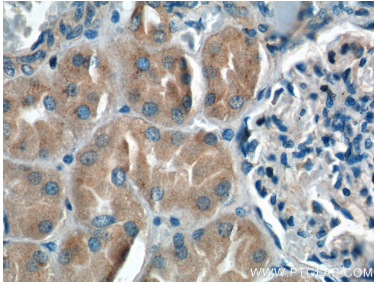
For technical support and original validation data for this product please contact:

T: 1 (888) 4PTGLAB (1-888-478-4522) (toll free in USA), or 1(312) 455-8498 (outside USA)

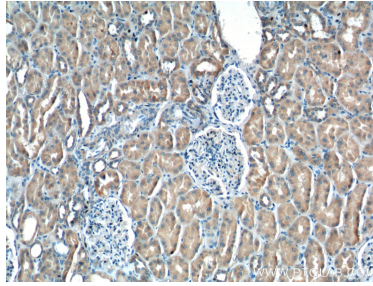
E: proteintech@ptglab.com
W: ptglab.com

This product is exclusively available under Proteintech Group brand and is not available to purchase from any other manufacturer.

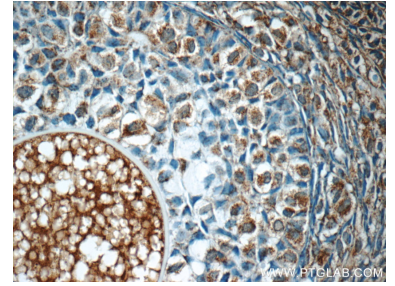
Selected Validation Data



Immunohistochemical analysis of paraffin-embedded human kidney tissue slide using 25395-1-AP (FAM20C Antibody) at dilution of 1:200 (under 40x lens).



Immunohistochemical analysis of paraffin-embedded human kidney tissue slide using 25395-1-AP (FAM20C Antibody) at dilution of 1:200 (under 10x lens).



Immunohistochemical analysis of paraffin-embedded human ovary tissue slide using 25395-1-AP (FAM20C Antibody) at dilution of 1:50 (under 40x lens).